

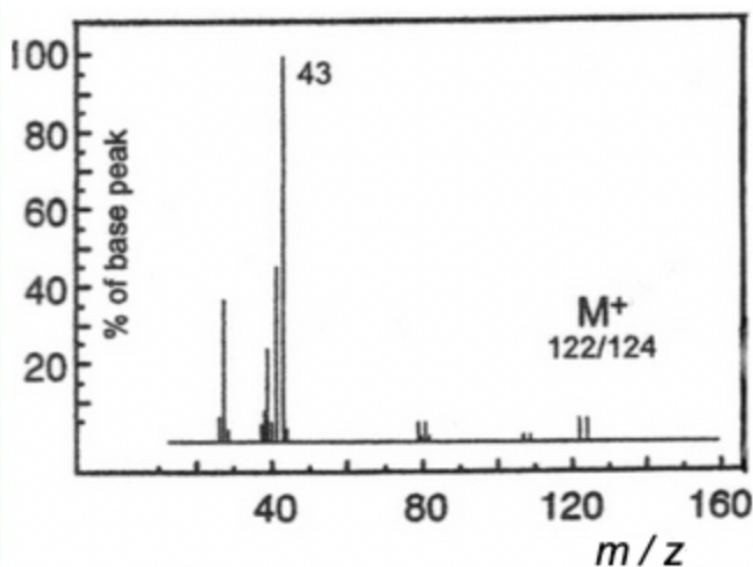
SL & HL Spectroscopic identification of organic compounds: Question 4

Identify **Compound D** from the data (a – d) given and explain how you arrived at your answer

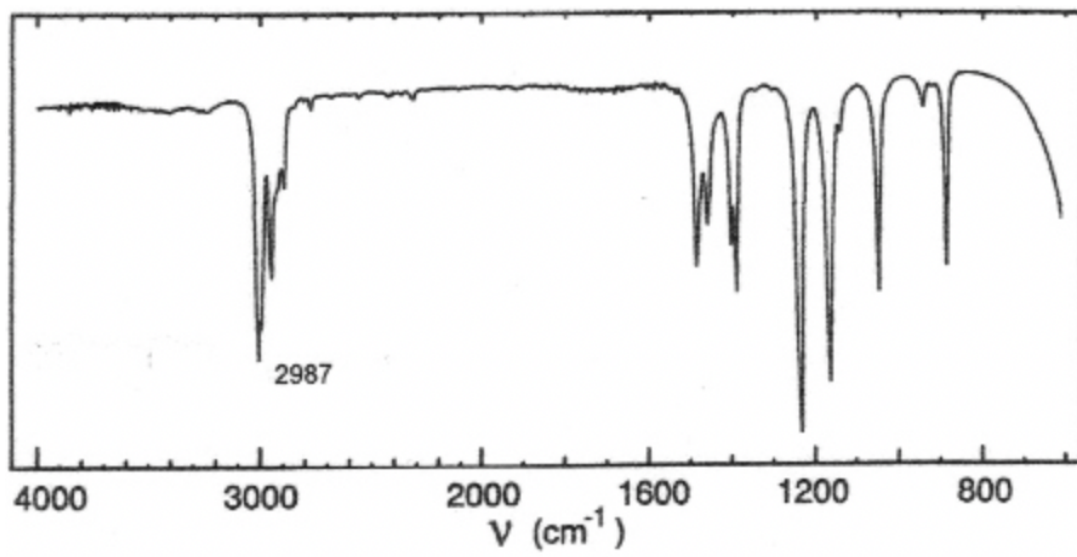
(a) Elemental analysis of **compound D**

Element	Percentage by mass
Carbon	29.29
Hydrogen	5.75
Bromine	64.96

(b) Mass spectrum of **compound D**



(c) Infrared spectrum of **compound D**



(d) Information about **compound D** from low resolution ^1H NMR spectrum

Position of signal / δ ppm	Integration trace
1.7	6
4.3	1