

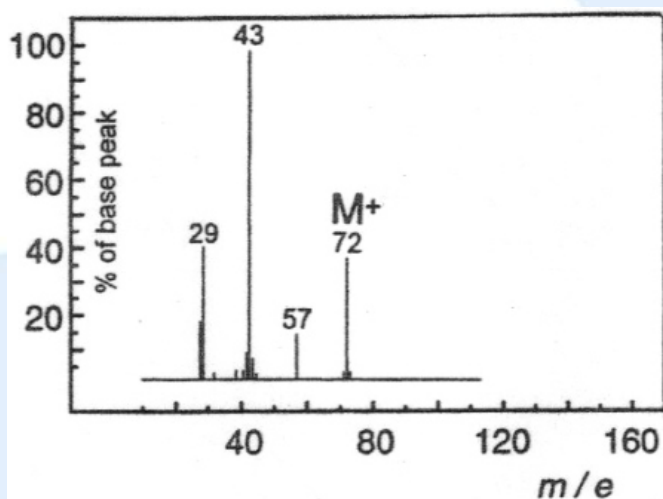
SL & HL Spectroscopic identification of organic compounds: Question 3

Identify **Compound C** from the data (a – d) given and explain how you arrived at your answer

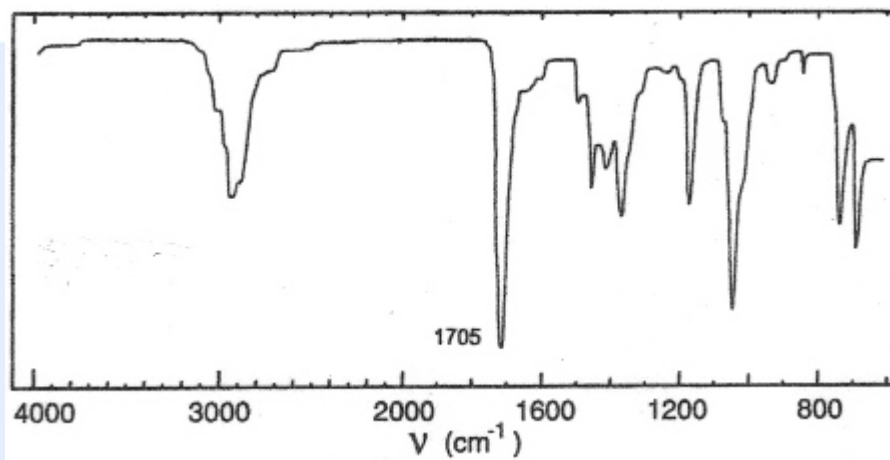
(a) Elemental analysis of **compound C**

Element	Percentage by mass
Carbon	66.61
Hydrogen	11.20
Oxygen	22.19

(b) Mass spectrum of **compound C**



(c) Infrared spectrum of **compound C**



(d) Information about **compound C** from ^1H NMR spectrum

Position of signal / δ ppm	Integration trace
0.9	3
2.0	3
2.3	2