

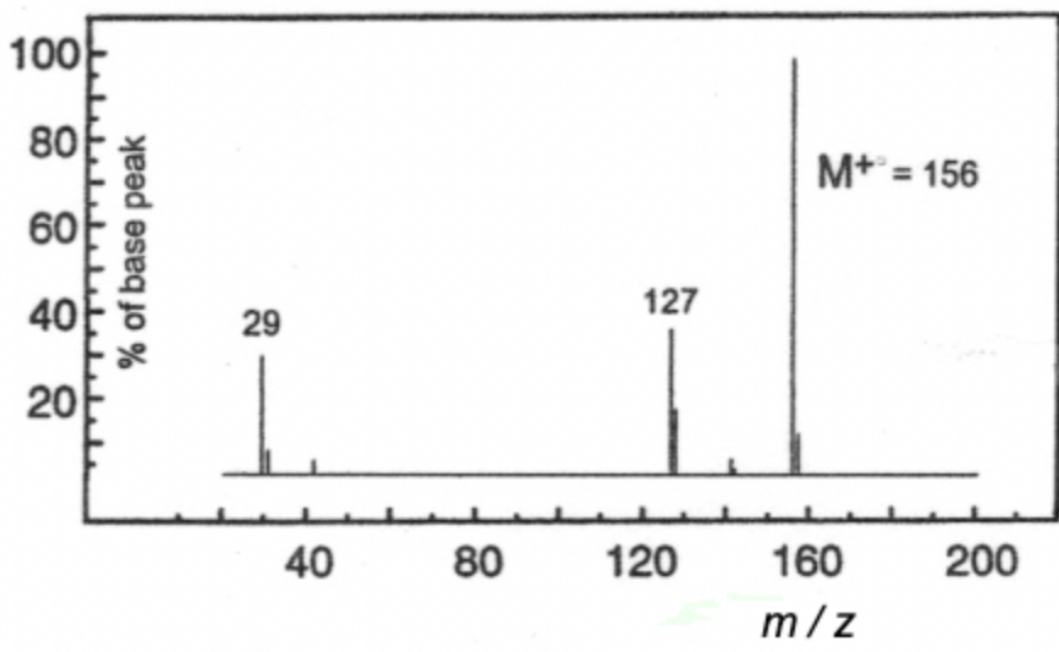
SL & HL Spectroscopic identification of organic compounds: Question 2

Identify **Compound B** from the data (a – d) given and explain how you arrived at your answer

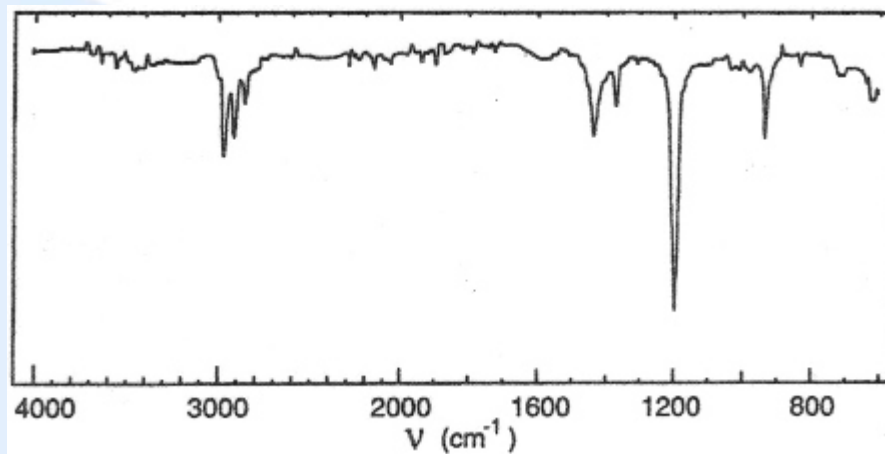
(a) Elemental analysis of **Compound B**

Element	Percentage by mass
Carbon	15.40
Hydrogen	3.24
Iodine	81.36

(b) Mass spectrum of **Compound B**



(c) Infrared spectrum of **Compound B**



(d) Information about **Compound B** from ^1H NMR spectrum

Position of signal / δ ppm	Integration trace
1.8	3
3.1	2