

# 5.1 Electric Fields

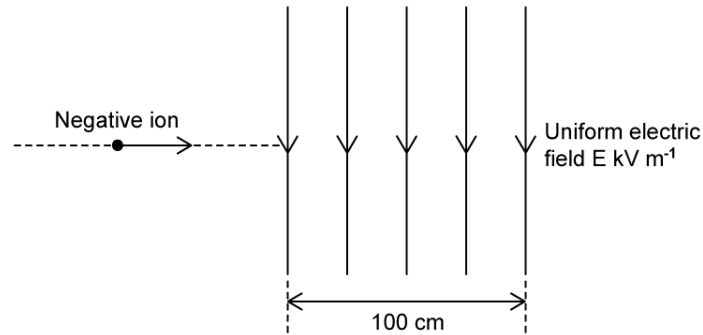
## Question Paper

Course	DPIB Physics
Section	5. Electricity & Magnetism
Topic	5.1 Electric Fields
Difficulty	Hard

**Time allowed:** 20  
**Score:** /9  
**Percentage:** /100

### Question 1

An ion of mass  $m$  kg carrying a charge of  $-Q$  pC travels horizontally with a kinetic energy of  $E_k = 10$  eV.



It enters a uniform vertical electric field of strength  $V$   $\text{kV m}^{-1}$ , which is directed downwards and acts over a horizontal distance of 100 cm.

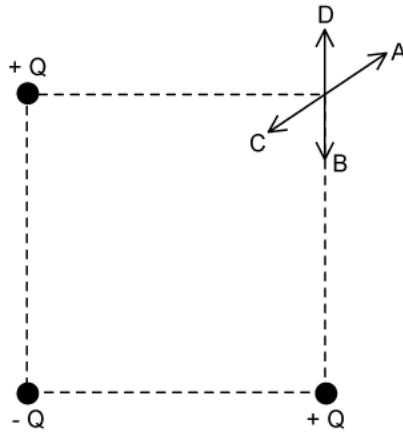
Which row in the table below correctly shows the time for the ion to pass through the field, and the magnitude of the force on the ion?

	time / s	force
A.	$\frac{\sqrt{m}}{4\sqrt{10^{-19}}}$	$F$ nN
B.	$\frac{\sqrt{m}}{4\sqrt{2}\sqrt{10^{-19}}}$	$F$ nN
C.	$\frac{\sqrt{m}}{4\sqrt{2} \times 10^{-19}}$	$F$ $\mu$ N
D.	$\frac{\sqrt{m}}{4\sqrt{2}\sqrt{10^{-19}}}$	$F$ $\mu$ N

[1 mark]

### Question 2

Point charges, each of magnitude  $Q$  are placed at three corners of a square as shown in the diagram.



What is the direction of the resultant electric field at the corner with no charge?

[1 mark]

### Question 3

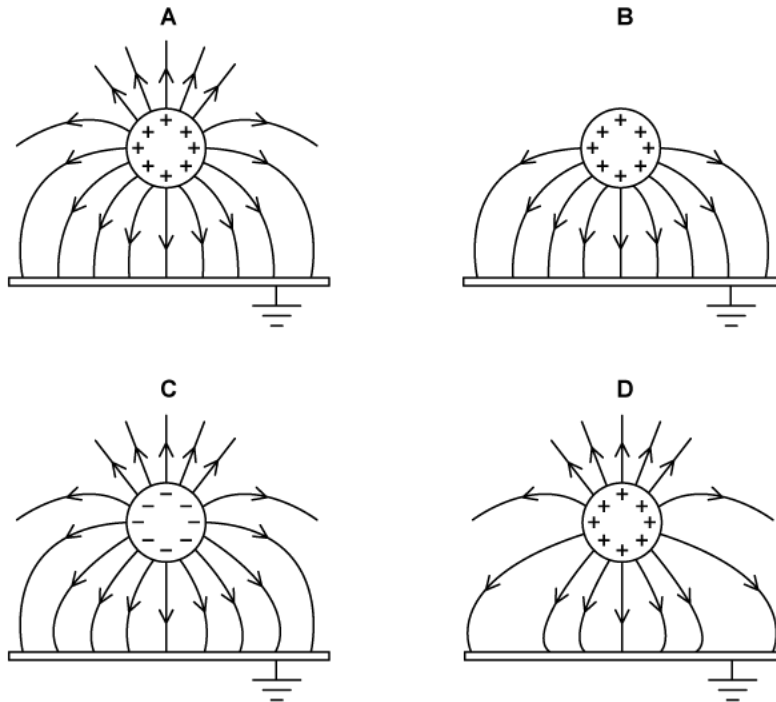
Which one of the following cannot be used as a unit for electric field strength?

- A.  $\text{N A}^{-1} \text{s}^{-1}$
- B.  $\text{m kg A}^{-1} \text{s}^{-3}$
- C.  $\text{m kg s}^{-1} \text{C}^{-1}$
- D.  $\text{J A}^{-1} \text{s}^{-1} \text{m}^{-1}$

[1 mark]

### Question 4

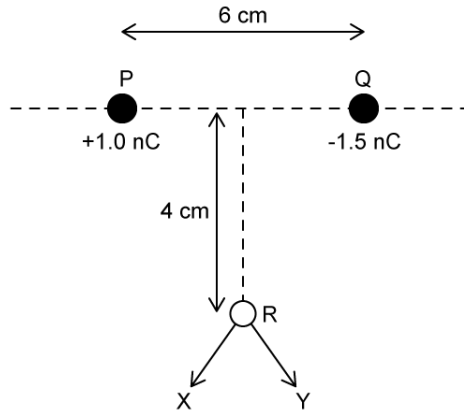
What is the electric field pattern between a conducting sphere and an earthed metal plate?



[1 mark]

**Question 5**

A  $+1.0 \text{ nC}$  and  $-1.5 \text{ nC}$  point charge are placed  $6 \text{ cm}$  apart at points **P** and **Q**. A point **R** is equidistant to both charges.



If an additional charge of  $+4.0 \text{ nC}$  is supplied to both charges, what is the magnitude of the electric field at **R** and the direction of this field?

	Magnitude of electric field strength	Direction of electric field
<b>A.</b>	$0.3 \text{ k} \times 10^{-5} \text{ NC}^{-1}$	Towards X
<b>B.</b>	$0.3 \text{ k} \times 10^{-5} \text{ NC}^{-1}$	Towards Y
<b>C.</b>	$0.1 \text{ k} \times 10^{-11} \text{ NC}^{-1}$	Towards X
<b>D.</b>	$0.2 \text{ k} \times 10^{-13} \text{ NC}^{-1}$	Towards Y

[1 mark]

## Question 6

A student queries their answer after solving some physics problems. The teacher explains that the problem lies in the text book solutions, some of which are incorrect.

An extract from the mark scheme is shown below:

### Electric Charge – p403

1. Permittivity of free space
2. Charges on the particles
  - a.  $3.67 \times 10^{-19} \text{ C}$
  - b.  $1.6 \times 10^{-19} \text{ C}$
  - c.  $8.0 \times 10^{-19} \text{ C}$
3.  $8.0 \times 10^{10} \text{ N}$  vertically upwards

Without calculation, which answer does the teacher know to be an error?

- A. 1.
- B. 2a.
- C. 2c.
- D. 3.

[1 mark]

## Question 7

Electric field strength is defined as 'the electric force per unit charge experienced by a small, positive point charge  $q$ '.

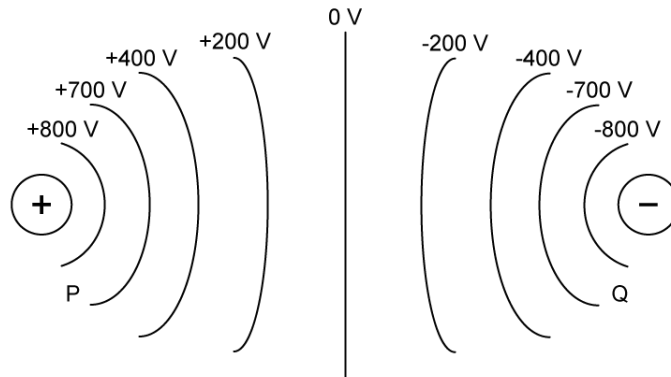
Why is the test charge described as 'small'?

- A. Because electrons are small.
- B. To obey Coulomb's law for point charges.
- C. So that the electric field is not distorted.
- D. So that the test charge does not exert a force on other charges in the region.

[1 mark]

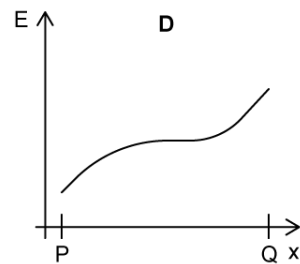
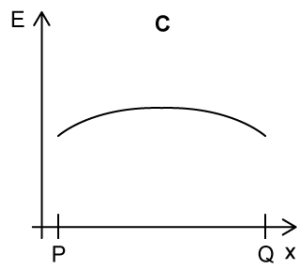
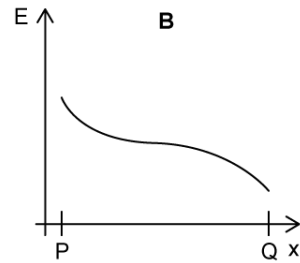
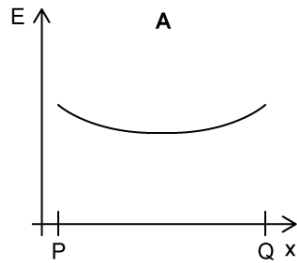
### Question 8

The electric potential at different points between two point charges is shown.



The electric field strength  $E$  varies along the line which connects P and Q.

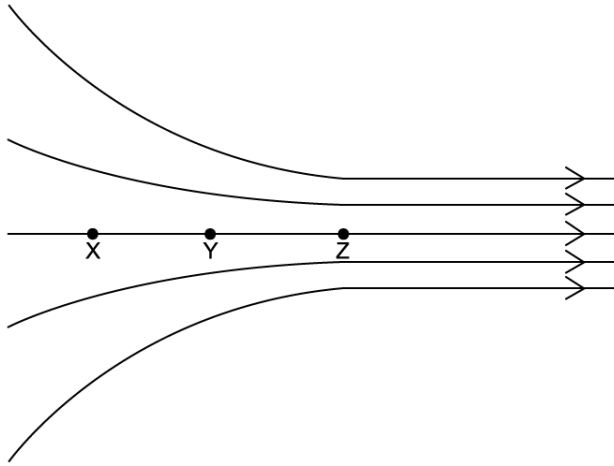
Which graph correctly shows this variation, where  $x$  is the distance along the line PQ?



[1 mark]

### Question 9

The diagram shows points X, Y and Z marked on a pattern of electric field lines. The spacing between X and Y and between Y and Z are the same.



The potential at X = 0 V and at Y is - 500 V.

What is a likely value for the potential at Z?

- A. - 600 V
- B. - 850 V
- C. - 1000 V
- D. - 1200 V

[1 mark]