

# 6.5 Neurones & Synapses

## Question Paper

Course	DP IB Biology
Section	6. Human Physiology
Topic	6.5 Neurones & Synapses
Difficulty	Easy

**Time allowed:** 10  
**Score:** /5  
**Percentage:** /100

### Question 1

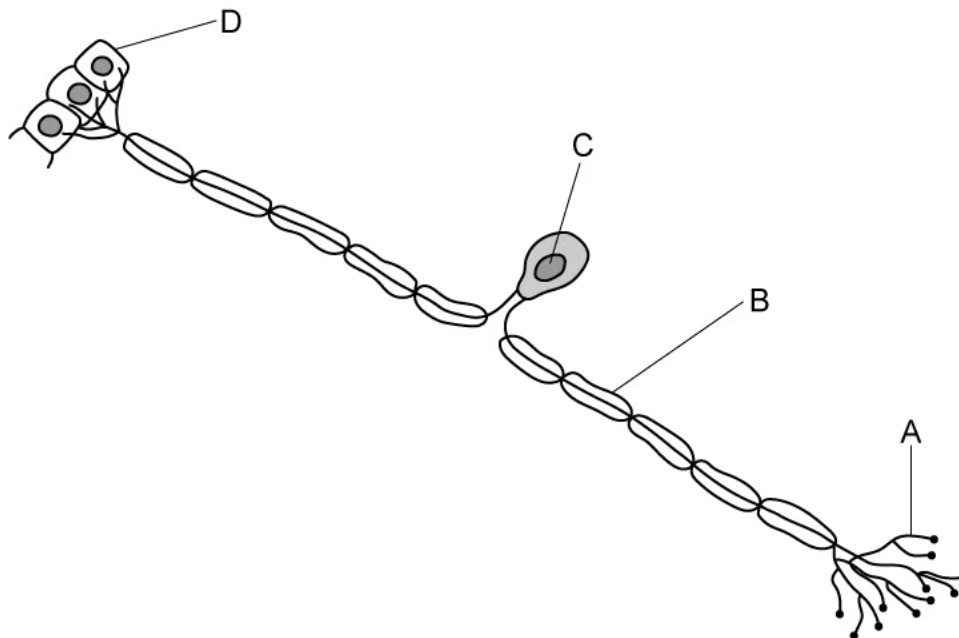
Between which structures do sensory neurones transmit electrical impulses?

- A. From effectors to the central nervous system (CNS).
- B. From effectors to receptors.
- C. From receptors to effectors.
- D. From receptors to the central nervous system (CNS).

[1 mark]

### Question 2

Where would myelin be found?



[1 mark]

### Question 3

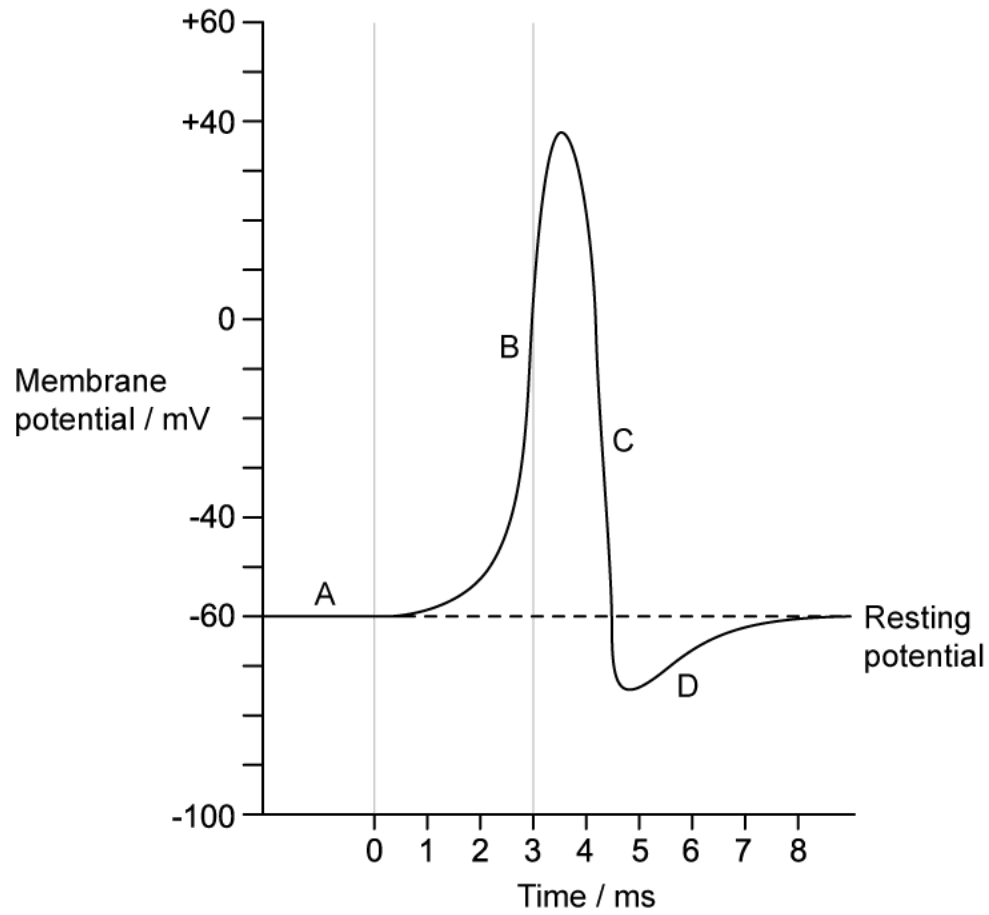
Which event directly results in the production of an action potential?

- A. Diffusion of neurotransmitter across the synaptic cleft.
- B. Fusion of vesicles with the presynaptic membrane.
- C. Membrane potential reaches the resting potential.
- D. Membrane potential reaches the threshold potential.

[1 mark]

### Question 4

Identify where depolarisation is occurring.



[1 mark]

**Question 5**

Neurotransmitters leave the presynaptic neurone and enter the synaptic cleft. After this, they travel across the cleft to a receptor on the postsynaptic neurone membrane.

Identify the processes that are required for this to occur.

	Neurotransmitters enter synaptic cleft	Neurotransmitters travel across cleft
<b>A.</b>	Endocytosis	Diffusion
<b>B.</b>	Endocytosis	Active transport
<b>C.</b>	Exocytosis	Diffusion
<b>D.</b>	Exocytosis	Active transport

[1 mark]