

# 6.6 Hormones, Homeostasis & Reproduction

## Question Paper

Course	DP IB Biology
Section	6. Human Physiology
Topic	6.6 Hormones, Homeostasis & Reproduction
Difficulty	Easy

**Time allowed:** 10  
**Score:** /5  
**Percentage:** /100

### Question 1

Which of the following cells in the pancreas secrete insulin?

- A. Alpha cells
- B. Beta cells
- C. Exocrine cells
- D. All of the above

[1 mark]

### Question 2

Which of the following statements (I – IV) correctly describe Type I diabetes?

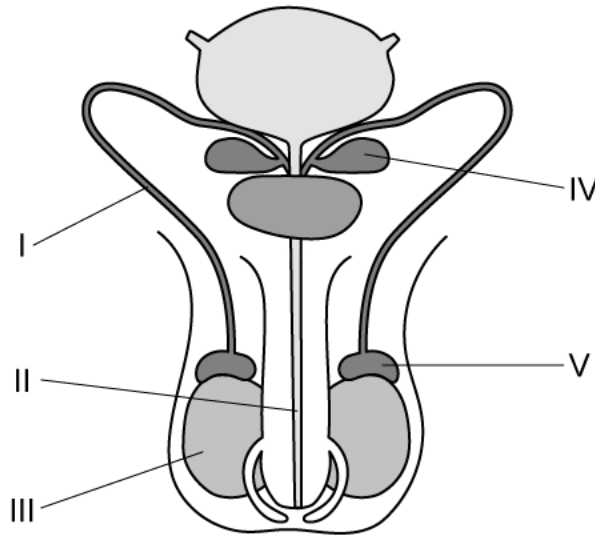
- I. It usually develops in those aged 40 and over, however more and more young people are developing the condition.
- II. It is a condition in which the pancreas fails to produce sufficient insulin to control blood glucose levels.
- III. It is normally treated with regular blood tests to check glucose levels, insulin injections, and a diabetes-appropriate diet.
- IV. It is more common than Type II diabetes.

- A. II and III
- B. II, III and IV
- C. I, III and IV
- D. I and II

[1 mark]

### Question 3

The diagram below shows the male reproductive system.



Which row correctly identifies the structures?

	I	II	III	IV	V
<b>A.</b>	Urethra	Sperm duct	Testis	Epididymis	Seminal vesicle
<b>B.</b>	Seminal vesicle	Penis	Scrotum	Bladder	Testis
<b>C.</b>	Sperm duct	Urethra	Seminal vesicle	Epididymis	Testis
<b>D.</b>	Sperm duct	Urethra	Testis	Seminal vesicle	Epididymis

[1 mark]

### Question 4

During which phase of the menstrual cycle does menstruation occur (approximately)?

- A. Days 1 - 7
- B. Days 7 - 14
- C. Days 14 - 21
- D. Days 21 - 28

[1 mark]

**Question 5**

The peak in luteinising hormone (LH) during the menstrual cycle lead to which of the following events?

- A. Stimulates the development of several immature egg cells in follicles in the ovary.
- B. Stimulates the secretion of oestrogen by the follicle wall.
- C. Stimulates the release of an egg into the oviduct.
- D. Stimulates the endometrium to start thickening and the egg cell to mature.

[1 mark]