

6.2 The Blood System

Question Paper

Course	DP IB Biology
Section	6. Human Physiology
Topic	6.2 The Blood System
Difficulty	Easy

Time allowed: 10
Score: /5
Percentage: /100

Question 1

Which statement puts the blood vessels into **increasing** order of lumen diameter (interior diameter)?

- A. capillary → artery → arteriole → aorta
- B. arteriole → artery → capillary → aorta
- C. aorta → artery → arteriole → capillary
- D. capillary → arteriole → artery → aorta

[1 mark]

Question 2

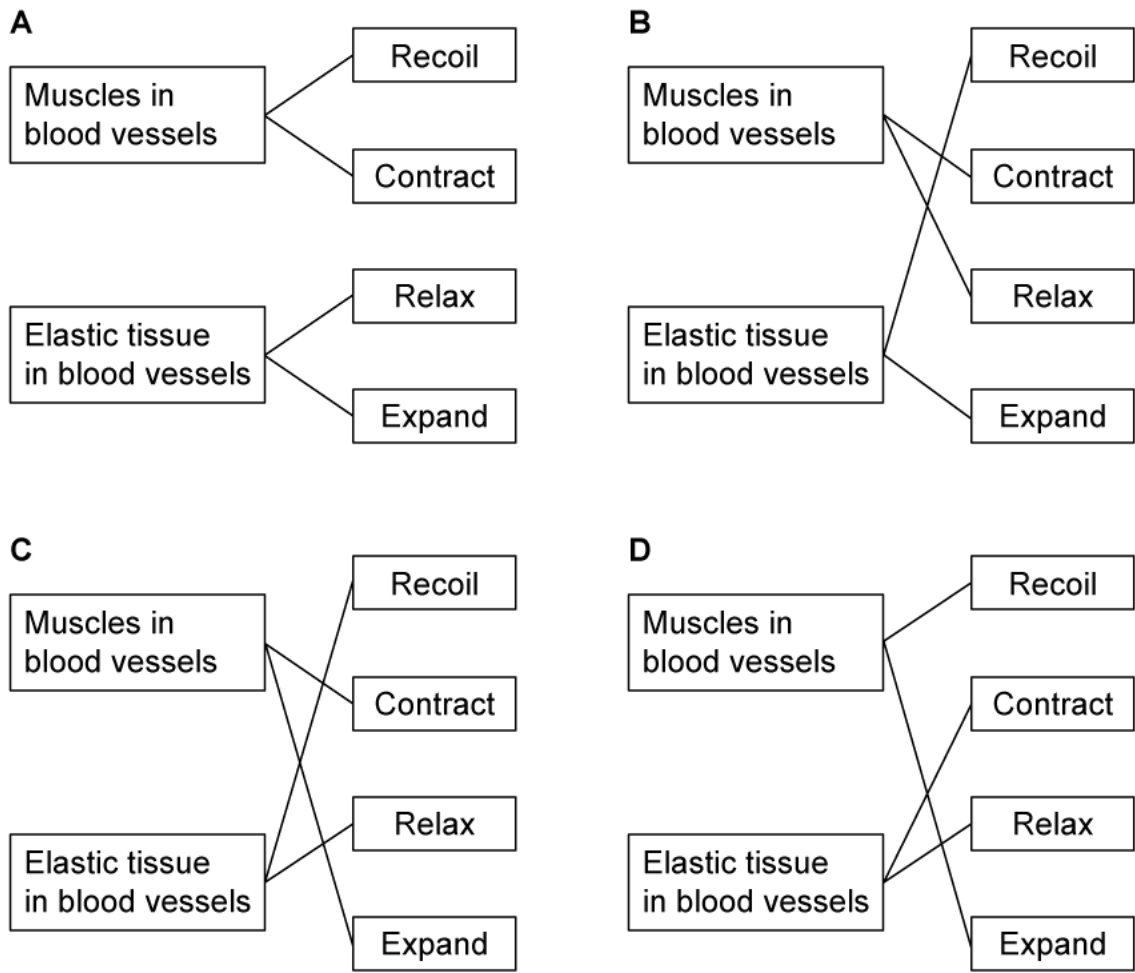
Which are chambers of the heart?

- I. Atrium
 - II. Aorta
 - III. Ventricle
 - IV. Lumen
- A. I and III
 - B. I, II and III
 - C. III and IV
 - D. I and II

[1 mark]

Question 3

Which shows the correct links between tissues within blood vessels and their modes of action?



[1 mark]

Question 4

Which statement about the human circulatory system is FALSE?

- A. The double circulatory system is a closed loop.
- B. In the double circulatory system, blood passes through the heart twice on each full circuit of the body.
- C. Blood bathes the cells in each organ that it is supplied to.
- D. The systemic circulation loop supplies blood to all the major body organs including the brain.

[1 mark]

Question 5

Which describes the sequence of chambers and vessels through which blood flows after it has left the vena cava, on its way to the lungs?

- A. right atrium → right ventricle → pulmonary artery → lungs
- B. left atrium → left ventricle → pulmonary artery → lungs
- C. right atrium → right ventricle → aorta → lungs
- D. left atrium → left ventricle → pulmonary vein → lungs

[1 mark]