



# **MARKSCHEME**

**November 2007**

**MATHEMATICS**

**Standard Level**

**Paper 2**

*This markscheme is **confidential** and for the exclusive use of examiners in this examination session.*

*It is the property of the International Baccalaureate and must **not** be reproduced or distributed to any other person without the authorization of IB Cardiff.*

## Instructions to Examiners

### Abbreviations

- M** Marks awarded for attempting to use a correct **Method**; working must be seen.
- (M)** Marks awarded for **Method**; may be implied by **correct** subsequent working.
- A** Marks awarded for an **Answer** or for **Accuracy**; often dependent on preceding **M** marks.
- (A)** Marks awarded for an **Answer** or for **Accuracy**; may be implied by **correct** subsequent working.
- R** Marks awarded for clear **Reasoning**.
- N** Marks awarded for **correct** answers if **no** working shown.
- AG** Answer given in the question and so no marks are awarded.

### Using the markscheme

#### 1 General

*Write the marks in red on candidates' scripts, in the right hand margin.*

- Show the **breakdown** of individual marks awarded using the abbreviations **MI**, **AI**, etc.
- Write down the total for each **question** (at the end of the question) and **circle** it.

#### 2 Method and Answer/Accuracy marks

- Do **not** automatically award full marks for a correct answer; all working **must** be checked, and marks awarded according to the markscheme.
- It is not possible to award **M0** followed by **AI**, as **A** mark(s) depend on the preceding **M** mark(s), if any.
- Where **M** and **A** marks are noted on the same line, e.g. **MIAI**, this usually means **MI** for an **attempt** to use an appropriate method (e.g. substitution into a formula) and **AI** for using the **correct** values.
- Where the markscheme specifies (**M2**), **N3**, etc., do **not** split the marks.
- Once a correct answer to a question or part-question is seen, ignore further working.

### 3 **N marks**

If **no** working shown, award **N** marks for **correct** answers.

- Do **not** award a mixture of **N** and other marks.
- There may be fewer **N** marks available than the total of **M**, **A** and **R** marks; this is deliberate as it penalizes candidates for not following the instruction to show their working.
- For consistency within the markscheme, **N** marks are noted for every part, even when these match the mark breakdown.
- If a candidate has incorrect working, which somehow results in a correct answer, do **not** award the **N** marks for this correct answer. However, if the candidate has indicated (usually by crossing out) that the working is to be ignored, award the **N** marks for the correct answer.

### 4 **Implied marks**

Implied marks appear in **brackets e.g. (M1)**, and can only be awarded if **correct** work is seen or if implied in subsequent working.

- Normally the correct work is seen or implied in the next line.
- Marks **without** brackets can only be awarded for work that is **seen**.

### 5 **Follow through marks**

Follow through (**FT**) marks are awarded where an incorrect answer from one **part** of a question is used correctly in **subsequent** part(s). To award **FT** marks, **there must be working present** and not just a final answer based on an incorrect answer to a previous part.

- If the question becomes much simpler because of an error then use discretion to award fewer **FT** marks.
- If the error leads to an inappropriate value (e.g. probability greater than 1, use of  $r > 1$  for the sum of an infinite GP,  $\sin \theta = 1.5$ ), do not award the mark(s) for the final answer(s).
- Within a question part, once an error is made, no further **A** marks can be awarded, but **M** marks may be awarded if appropriate.
- Exceptions to this rule will be explicitly noted on the markscheme.

### 6 **Mis-read**

If a candidate incorrectly copies information from the question, this is a mis-read (**MR**). Apply a **MR** penalty of 1 mark to that question. Award the marks as usual and then write  $-1(\mathbf{MR})$  next to the total. Subtract 1 mark from the total for the question. A candidate should be penalized only once for a particular mis-read.

- If the question becomes much simpler because of the **MR**, then use discretion to award fewer marks.
- If the **MR** leads to an inappropriate value (e.g.  $\sin \theta = 1.5$ ), do not award the mark(s) for the final answer(s).

### 7 **Discretionary marks (d)**

An examiner uses discretion to award a mark on the rare occasions when the markscheme does not cover the work seen. The mark should be labelled (**d**) and a brief **note** written next to the mark explaining this decision.

## 8 Alternative methods

Candidates will sometimes use methods other than those in the markscheme. Unless the question specifies a method, other correct methods should be marked in line with the markscheme. If in doubt, contact your team leader for advice.

- Alternative methods for complete questions are indicated by **METHOD 1**, **METHOD 2**, *etc.*
- Alternative solutions for part-questions are indicated by **EITHER . . . OR**.
- Where possible, alignment will also be used to assist examiners in identifying where these alternatives start and finish.

## 9 Alternative forms

*Unless the question specifies otherwise, **accept** equivalent forms.*

- As this is an international examination, accept all alternative forms of **notation**.
- In the markscheme, equivalent **numerical** and **algebraic** forms will generally be written in brackets immediately following the answer.
- In the markscheme, **simplified** answers, (which candidates often do not write in examinations), will generally appear in brackets. Marks should be awarded for either the form preceding the bracket or the form in brackets (if it is seen).

**Example:** for differentiating  $f(x) = 2\sin(5x - 3)$ , the markscheme gives:

$$f'(x) = 2\cos(5x - 3) \cdot 5 = 10\cos(5x - 3) \quad \mathbf{AI}$$

Award **AI** for  $2\cos(5x - 3) \cdot 5$ , even if  $10\cos(5x - 3)$  is not seen.

## 10 Accuracy of Answers

*If the level of accuracy is specified in the question, a mark will be allocated for giving the answer to the required accuracy.*

- **Rounding errors:** only applies to final answers not to intermediate steps.
- **Level of accuracy:** when this is not specified in the question the general rule applies: *unless otherwise stated in the question all numerical answers must be given exactly or correct to three significant figures.*

*Candidates should be penalized **once only IN THE PAPER** for an accuracy error (**AP**). Award the marks as usual then write (**AP**) against the answer. On the **front** cover write  $-1(\mathbf{AP})$ . Deduct 1 mark from the total for the paper, not the question.*

- If a final correct answer is incorrectly rounded, apply the **AP**.
- If the level of accuracy is not specified in the question, apply the **AP** for correct answers not given to three significant figures.
- Intermediate values are sometimes written as 3.24(741). This indicates that using 3.24 (or 3.25) is acceptable, but the more accurate value is 3.24741. The digits in brackets are not required for the marks. If candidates work with fewer than three significant figures, this could lead to an **AP**.

**If there is no working shown**, and answers are given to the correct two significant figures, apply the **AP**. However, do **not** accept answers to one significant figure without working.

**11 Crossed out work**

*If a candidate has drawn a line through work on their examination script, or in some other way crossed out their work, do not award any marks for that work.*

**QUESTION 1**

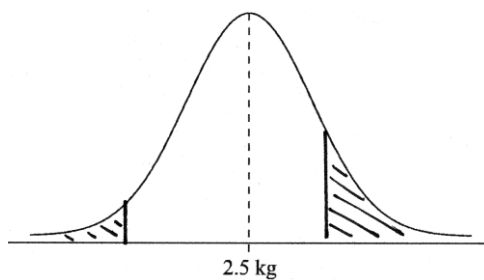
**Part A**

**Note:** Candidates may be using tables in this question, which leads to a variety of values. Accept reasonable answers that are consistent with working shown.

$W \sim N(2.5, 0.3^2)$

- (a) (i)  $z = -1.67$  (accept 1.67) (AI) N2  
 $P(W < 2) = 0.0478$  (accept answers between 0.0475 and 0.0485) AI
- (ii)  $z = 1$  (AI) N2  
 $P(W > 2.8) = 0.159$  AI

(iii)



AI AI N2

**Note:** Award AI for a vertical line to left of mean and shading to left, AI for vertical line to right of mean and shading to right.

- (iv) Evidence of appropriate calculation MI  
 e.g.  $1 - (0.047790 + 0.15866)$ ,  $0.8413 - 0.0478$   
 $p = 0.7936$  AG N0

**Note:** The final value may vary depending on what level of accuracy is used. Accept their value in subsequent parts.

[7 marks]

continued...

*Question 1 Part A continued*

- (b) (i)  $X \sim B(10, 0.7935\dots)$   
 Evidence of calculation **MI**  
*e.g.*  $P(X = 10) = (0.7935\dots)^{10}$   
 $P(X = 10) = 0.0990$  (3 s.f.) **AI** **NI**
- (ii) **METHOD 1**  
 Recognising  $X \sim B(10, 0.7935\dots)$  (may be seen in (i)) **(MI)**  
  
 $P(X \leq 6) = 0.1325\dots$  (or  $P(X = 1) + \dots + P(X = 6)$ ) **(AI)**  
 evidence of using the complement **(MI)**  
*e.g.*  $P(X \geq 7) = 1 - P(X \leq 6)$ ,  $P(X \geq 7) = 1 - P(X < 7)$   
 $P(X \geq 7) = 0.867$  **AI** **N3**
- METHOD 2**  
 Recognising  $X \sim B(10, 0.7935\dots)$  (may be seen in (i)) **(MI)**  
  
 For adding terms from  $P(X = 7)$  to  $P(X = 10)$  **(MI)**  
 $P(X \geq 7) = 0.209235 + 0.301604 + 0.257629 + 0.099030$  **(AI)**  
 $= 0.867$  **AI** **N3**

**[6 marks]**

**Sub-total [13 marks]**

*continued ...*



Question 1 continued

**Part B**

(a) (i)  $A^{-1} = \begin{pmatrix} 0 & \frac{1}{2} \\ \frac{1}{2} & 0 \end{pmatrix}$  A2 N2

(ii)  $A^2 = \begin{pmatrix} 4 & 0 \\ 0 & 4 \end{pmatrix}$  A2 N2

[4 marks]

(b)  $\begin{pmatrix} 0 & 4 \\ 4 & 0 \end{pmatrix} + \begin{pmatrix} p & 2 \\ 0 & q \end{pmatrix} = \begin{pmatrix} 2 & 6 \\ 4 & 3 \end{pmatrix}$  (M1)  
 $p = 2, q = 3$  A1A1 N3

[3 marks]

(c) Evidence of attempt to multiply (M1)

e.g.  $A^{-1}B = \begin{pmatrix} 0 & \frac{1}{2} \\ \frac{1}{2} & 0 \end{pmatrix} \begin{pmatrix} 2 & 2 \\ 0 & 3 \end{pmatrix}$

$A^{-1}B = \begin{pmatrix} 0 & \frac{3}{2} \\ 1 & 1 \end{pmatrix}$  A1 N2 (accept  $\begin{pmatrix} 0 & \frac{1}{2}q \\ \frac{1}{2}p & 1 \end{pmatrix}$ )

[2 marks]

(d) Evidence of correct approach (M1)

e.g.  $X = A^{-1}B$ , setting up a system of equations

$X = \begin{pmatrix} 0 & \frac{3}{2} \\ 1 & 1 \end{pmatrix}$  A1 N2 (accept  $\begin{pmatrix} 0 & \frac{1}{2}q \\ \frac{1}{2}p & 1 \end{pmatrix}$ )

[2 marks]

**Sub-total [11 marks]**

**Total [24 marks]**

**QUESTION 2**

(a) (i) Evidence of approach

$$e.g. \vec{JQ} = \begin{pmatrix} 0 \\ 7 \\ 10 \end{pmatrix} - \begin{pmatrix} 6 \\ 0 \\ 0 \end{pmatrix}, \vec{JQ} = \vec{JO} + \vec{OQ}$$

**MI**

$$\vec{JQ} = \begin{pmatrix} -6 \\ 7 \\ 10 \end{pmatrix}$$

**AG**

**N0**

(ii)  $\vec{MK} = \begin{pmatrix} 6 \\ -7 \\ 10 \end{pmatrix}$

**AI**

**N1**

**[2 marks]**

*continued ...*

Question 2 continued

(b) (i)  $\mathbf{r} = \begin{pmatrix} 6 \\ 0 \\ 0 \end{pmatrix} + t \begin{pmatrix} -6 \\ 7 \\ 10 \end{pmatrix}$  or  $\mathbf{r} = \begin{pmatrix} 0 \\ 7 \\ 10 \end{pmatrix} + t \begin{pmatrix} -6 \\ 7 \\ 10 \end{pmatrix}$  A2 N2

**Note:** Award **AI** if “ $\mathbf{r} =$ ” is missing.

(ii) Evidence of choosing correct vectors  $\begin{pmatrix} -6 \\ 7 \\ 10 \end{pmatrix}, \begin{pmatrix} 6 \\ -7 \\ 10 \end{pmatrix}$  (AI)(AI)

Evidence of calculating magnitudes (AI)(AI)

*e.g.*  $\sqrt{(-6)^2 + 7^2 + 10^2} = \sqrt{185}$   $\sqrt{6^2 + (-7)^2 + 10^2} = \sqrt{185}$

$\begin{pmatrix} -6 \\ 7 \\ 10 \end{pmatrix} \cdot \begin{pmatrix} 6 \\ -7 \\ 10 \end{pmatrix} = -36 - 49 + 100$  (=15) (accept -15) (AI)

For evidence of substitution into the correct formula MI

*e.g.*  $\cos \theta = \frac{15}{\sqrt{185}\sqrt{185}}$   $\left( = \frac{15}{185} = 0.0811 \right)$   $\left( \text{accept } \frac{-15}{\sqrt{185}\sqrt{185}} \right)$

$\theta = 1.49$  (radians),  $85.3^\circ$  AI N4

[9 marks]

(c) **METHOD 1**

Geometric approach (MI)

Valid reasoning A2

*e.g.* diagonals bisect each other,  $\vec{OD} = \vec{OM} + \frac{1}{2}\vec{MK}$

Calculation of mid point (AI)

*e.g.*  $\left( \frac{6+0}{2}, \frac{0+7}{2}, \frac{0+10}{2} \right)$

$\vec{OD} = \begin{pmatrix} 3 \\ 3.5 \\ 5 \end{pmatrix}$  (accept (3, 3.5, 5)) AI N3

continued...

Question 2 (c) continued

**METHOD 2**

Correct approach

(M1)

$$e.g. \begin{pmatrix} 6 \\ 0 \\ 0 \end{pmatrix} + t \begin{pmatrix} -6 \\ 7 \\ 10 \end{pmatrix} = \begin{pmatrix} 0 \\ 7 \\ 0 \end{pmatrix} + s \begin{pmatrix} 6 \\ -7 \\ 10 \end{pmatrix}$$

Two correct equations

A1

$$e.g. 6 - 6t = 6s, 7t = 7 - 7s, 10t = 10s$$

Attempt to solve

(M1)

One correct parameter

$$s = 0.5 \quad t = 0.5$$

A1

$$\vec{OD} = \begin{pmatrix} 3 \\ 3.5 \\ 5 \end{pmatrix} \quad (\text{accept } (3, 3.5, 5))$$

A1

N3

**METHOD 3**

Correct approach

(M1)

$$e.g. \begin{pmatrix} 0 \\ 7 \\ 10 \end{pmatrix} + t \begin{pmatrix} -6 \\ 7 \\ 10 \end{pmatrix} = \begin{pmatrix} 0 \\ 7 \\ 0 \end{pmatrix} + s \begin{pmatrix} 6 \\ -7 \\ 10 \end{pmatrix}$$

Two correct equations

A1

$$e.g. -6t = 6s, 7 + 7t = 7 - 7s, 10 + 10t = 10s$$

Attempt to solve

(M1)

One correct parameter

$$s = 0.5 \quad t = -0.5$$

A1

$$\vec{OD} = \begin{pmatrix} 3 \\ 3.5 \\ 5 \end{pmatrix} \quad (\text{accept } (3, 3.5, 5))$$

A1

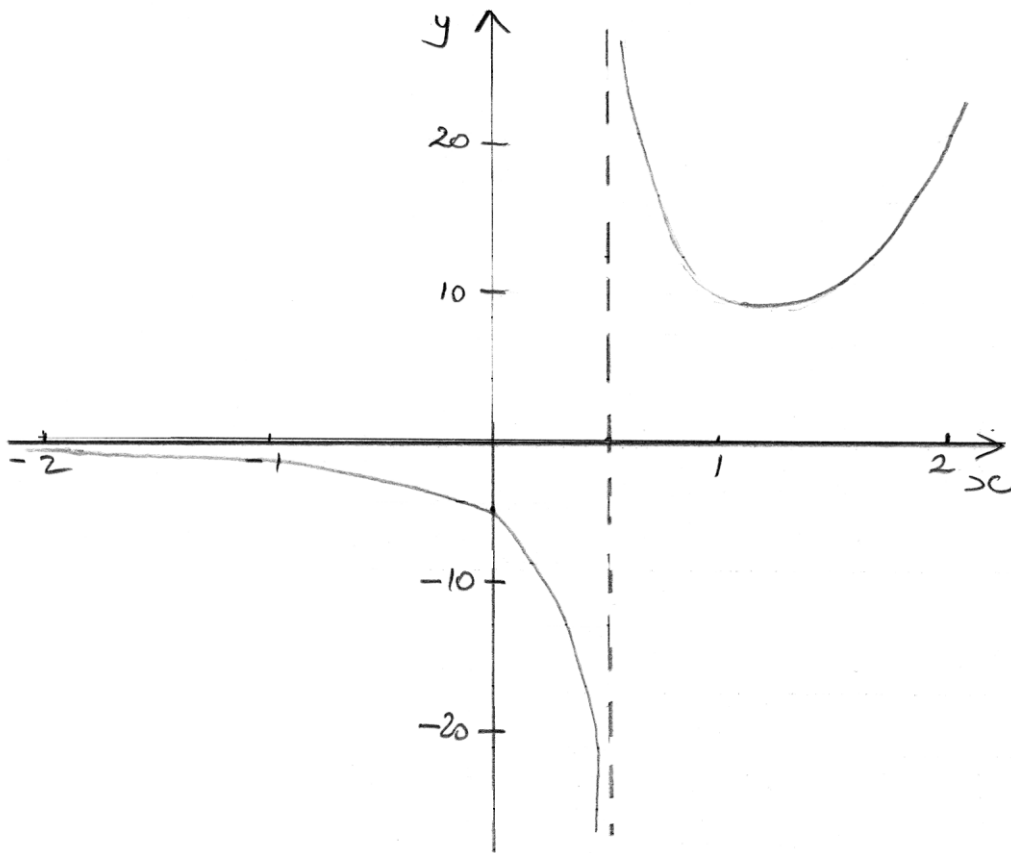
N3

[5 marks]

Total [16 marks]

**QUESTION 3**

(a)



**AIAIAI N3**

**Note:** Award **AI** for the left branch asymptotic to the  $x$ -axis and crossing the  $y$ -axis, **AI** for the right branch approximately the correct shape, **AI** for a vertical asymptote at approximately  $x = \frac{1}{2}$ .

**[3 marks]**

(b) (i)  $x = \frac{1}{2}$  (must be an equation) **AI N1**

(ii)  $\int_0^2 f(x) dx$  **AI N1**

(iii) Valid reason **RI N1**  
*e.g.* reference to area undefined or discontinuity

**Note:** GDC reason **not** acceptable.

**[3 marks]**

*continued ...*

*Question 3 continued*

- (c) (i)  $V = \pi \int_1^{1.5} f(x)^2 dx$  A2 N2
- (ii)  $V = 105$  (accept  $33.3\pi$ ) A2 N2  
[4 marks]
- (d)  $f'(x) = 2e^{2x-1} - 10(2x-1)^{-2}$  AIAIAIAI N4  
[4 marks]
- (e) (i)  $x = 1.11$  (accept (1.11, 7.49)) A1 N1
- (ii)  $p = 0, q = 7.49$  (accept  $0 \leq k < 7.49$ ) AIAI N2  
[3 marks]
- Total [17 marks]**

**QUESTION 4**

(a) **METHOD 1**

Using the discriminant  $\Delta = 0$

(M1)

$$k^2 = 4 \times 4 \times 1$$

$$k = 4, k = -4$$

A1A1

N3

**METHOD 2**

Factorising

(M1)

$$(2x \pm 1)^2$$

$$k = 4, k = -4$$

A1A1

N3

[3 marks]

(b) Evidence of using  $\cos 2\theta = 2\cos^2 \theta - 1$

M1

e.g.  $2(2\cos^2 \theta - 1) + 4\cos \theta + 3$

$$f(\theta) = 4\cos^2 \theta + 4\cos \theta + 1$$

AG

N0

[1 mark]

(c) (i) 1

A1

N1

(ii) **METHOD 1**

Attempting to solve for  $\cos \theta$

M1

$$\cos \theta = -\frac{1}{2}$$

(A1)

$$\theta = 240, 120, -240, -120 \text{ (correct four values only)}$$

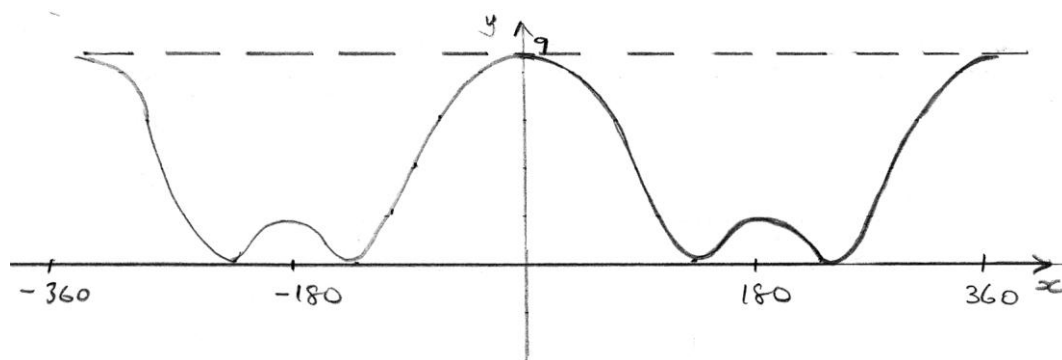
A2

N3

**METHOD 2**

Sketch of  $y = 4\cos^2 \theta + 4\cos \theta + 1$

M1



Indicating 4 zeros

(A1)

$$\theta = 240, 120, -240, -120 \text{ (correct four values only)}$$

A2

N3

[5 marks]

(d) Using sketch

(M1)

$$c = 9$$

A1

N2

[2 marks]

Total [11 marks]

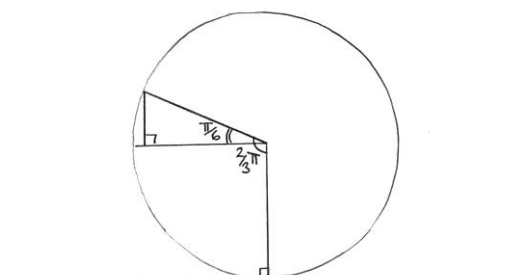
**QUESTION 5**

**Note:** Accept **exact** answers given in terms of  $\pi$  .

- (a) Evidence of using  $l = r\theta$  (M1)  
 arc AB = 7.85 (m) A1 N2  
[2 marks]

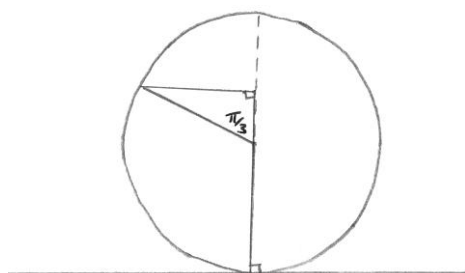
- (b) Evidence of using  $A = \frac{1}{2}r^2\theta$  (M1)  
 Area of sector AOB = 58.9 (m<sup>2</sup>) A1 N2  
[2 marks]

(c) **METHOD 1**



- angle =  $\frac{\pi}{6}$  (30°) (A1)  
 attempt to find  $15 \sin \frac{\pi}{6}$  M1  
 height =  $15 + 15 \sin \frac{\pi}{6}$   
           = 22.5 (m) A1 N2

**METHOD 2**



- angle =  $\frac{\pi}{3}$  (60°) (A1)  
 attempt to find  $15 \cos \frac{\pi}{3}$  M1  
 height =  $15 + 15 \cos \frac{\pi}{3}$   
           = 22.5 (m) A1 N2

[3 marks]

continued ...



Question 5 continued

(d) (i)  $h\left(\frac{\pi}{4}\right) = 15 - 15\cos\left(\frac{\pi}{2} + \frac{\pi}{4}\right)$  **(M1)**  
 $= 25.6 \text{ (m)}$  **A1** **N2**

(ii)  $h(0) = 15 - 15\cos\left(0 + \frac{\pi}{4}\right)$  **(M1)**  
 $= 4.39 \text{ (m)}$  **A1** **N2**

(iii) **METHOD 1**

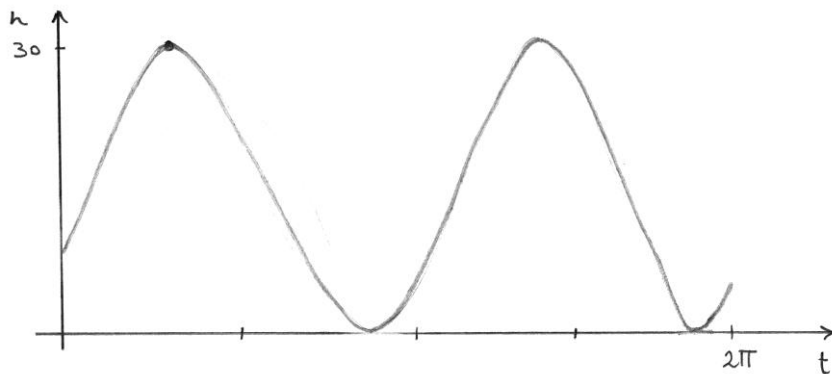
Highest point when  $h = 30$  **R1**

$30 = 15 - 15\cos\left(2t + \frac{\pi}{4}\right)$  **M1**

$\cos\left(2t + \frac{\pi}{4}\right) = -1$  **(A1)**

$t = 1.18 \text{ (accept } \frac{3\pi}{8})$  **A1** **N2**

**METHOD 2**



Sketch of graph of  $h$  **M2**  
 Correct maximum indicated **(A1)**  
 $t = 1.18$  **A1** **N2**

**METHOD 3**

Evidence of setting  $h'(t) = 0$  **M1**

$\sin\left(2t + \frac{\pi}{4}\right) = 0$  **(A1)**

Justification of maximum **R1**  
*e.g.* reasoning from diagram, first derivative test, second derivative test

$t = 1.18 \text{ (accept } \frac{3\pi}{8})$  **A1** **N2**

**[8 marks]**

*continued ...*

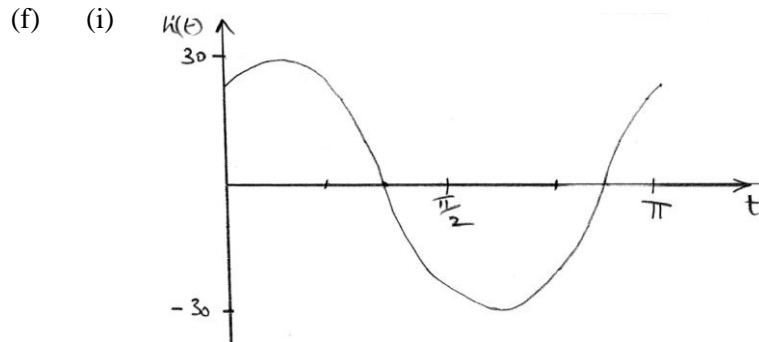
Question 5 continued

(e)  $h'(t) = 30\sin\left(2t + \frac{\pi}{4}\right)$  (may be seen in part (d))

AIAI

N2

[2 marks]



AIAIAI

N3

**Note:** Award **AI** for range  $-30$  to  $30$ , **AI** for two zeros.  
Award **AI** for approximate correct **sinusoidal** shape.

(ii) **METHOD 1**

Maximum on graph of  $h'$   
 $t = 0.393$

(M1)

AI

N2

**METHOD 2**

Minimum on graph of  $h'$   
 $t = 1.96$

(M1)

AI

N2

**METHOD 3**

Solving  $h''(t) = 0$   
One or both correct answers  
 $t = 0.393, t = 1.96$

(M1)

AI

N2

[5 marks]

Total [22 marks]