



# **MARKSCHEME**

**May 2011**

**MATHEMATICS**

**Higher Level**

**Paper 1**

*This markscheme is **confidential** and for the exclusive use of examiners in this examination session.*

*It is the property of the International Baccalaureate and must **not** be reproduced or distributed to any other person without the authorization of IB Cardiff.*

## Instructions to Examiners

### Abbreviations

- M** Marks awarded for attempting to use a correct **Method**; working must be seen.
- (M)** Marks awarded for **Method**; may be implied by **correct** subsequent working.
- A** Marks awarded for an **Answer** or for **Accuracy**; often dependent on preceding **M** marks.
- (A)** Marks awarded for an **Answer** or for **Accuracy**; may be implied by **correct** subsequent working.
- R** Marks awarded for clear **Reasoning**.
- N** Marks awarded for **correct** answers if **no** working shown.
- AG** Answer given in the question and so no marks are awarded.

### Using the markscheme

#### 1 General

*Write the marks in red on candidates' scripts, in the right hand margin.*

- Show the **breakdown** of individual marks awarded using the abbreviations **MI**, **AI**, etc.
- Write down the total for each **question** (at the end of the question) and **circle** it.

#### 2 Method and Answer/Accuracy marks

- Do **not** automatically award full marks for a correct answer; all working **must** be checked, and marks awarded according to the markscheme.
- It is not possible to award **M0** followed by **AI**, as **A** mark(s) depend on the preceding **M** mark(s), if any.
- Where **M** and **A** marks are noted on the same line, e.g. **MIAI**, this usually means **MI** for an **attempt** to use an appropriate method (e.g. substitution into a formula) and **AI** for using the **correct** values.
- Where the markscheme specifies (**M2**), **N3**, etc., do **not** split the marks.
- Once a correct answer to a question or part-question is seen, ignore further working.

#### 3 N marks

*Award N marks for **correct** answers where there is **no** working.*

- Do **not** award a mixture of **N** and other marks.
- There may be fewer **N** marks available than the total of **M**, **A** and **R** marks; this is deliberate as it penalizes candidates for not following the instruction to show their working.

#### 4 Implied marks

*Implied marks appear in **brackets e.g. (M1)**, and can only be awarded if **correct** work is seen or if implied in subsequent working.*

- Normally the correct work is seen or implied in the next line.
- Marks **without** brackets can only be awarded for work that is **seen**.

#### 5 Follow through marks

*Follow through (**FT**) marks are awarded where an incorrect answer from one **part** of a question is used correctly in **subsequent** part(s) or subpart(s). Usually, to award **FT** marks, **there must be working present** and not just a final answer based on an incorrect answer to a previous part. However, if the only marks awarded in a subpart are for the answer (i.e. there is no working expected), then **FT** marks should be awarded if appropriate.*

- If the question becomes much simpler because of an error then use discretion to award fewer **FT** marks.
- If the error leads to an inappropriate value (e.g.  $\sin \theta = 1.5$ ), do not award the mark(s) for the final answer(s).
- Within a question part, once an error is made, no further **dependent A** marks can be awarded, but **M** marks may be awarded if appropriate.
- Exceptions to this rule will be explicitly noted on the markscheme.

#### 6 Mis-read

*If a candidate incorrectly copies information from the question, this is a mis-read (**MR**). Apply a **MR** penalty of 1 mark to that question. Award the marks as usual and then write  $-1(\mathbf{MR})$  next to the total. Subtract 1 mark from the total for the question. A candidate should be penalized only once for a particular mis-read.*

- If the question becomes much simpler because of the **MR**, then use discretion to award fewer marks.
- If the **MR** leads to an inappropriate value (e.g.  $\sin \theta = 1.5$ ), do not award the mark(s) for the final answer(s).

#### 7 Discretionary marks (**d**)

*An examiner uses discretion to award a mark on the rare occasions when the markscheme does not cover the work seen. The mark should be labelled (**d**) and a brief **note** written next to the mark explaining this decision.*

#### 8 Alternative methods

*Candidates will sometimes use methods other than those in the markscheme. Unless the question specifies a method, other correct methods should be marked in line with the markscheme. If in doubt, contact your team leader for advice.*

- Alternative methods for complete questions are indicated by **METHOD 1, METHOD 2, etc.**
- Alternative solutions for part-questions are indicated by **EITHER . . . OR.**
- Where possible, alignment will also be used to assist examiners in identifying where these alternatives start and finish.

## 9 Alternative forms

Unless the question specifies otherwise, **accept** equivalent forms.

- As this is an international examination, accept all alternative forms of **notation**.
- In the markscheme, equivalent **numerical** and **algebraic** forms will generally be written in brackets immediately following the answer.
- In the markscheme, **simplified** answers, (which candidates often do not write in examinations), will generally appear in brackets. Marks should be awarded for either the form preceding the bracket or the form in brackets (if it is seen).

**Example:** for differentiating  $f(x) = 2\sin(5x - 3)$ , the markscheme gives:

$$f'(x) = (2\cos(5x - 3))5 \quad (=10\cos(5x - 3)) \quad \text{AI}$$

Award **AI** for  $(2\cos(5x - 3))5$ , even if  $10\cos(5x - 3)$  is not seen.

## 10 Accuracy of Answers

If the level of accuracy is specified in the question, a mark will be allocated for giving the answer to the required accuracy.

- **Rounding errors:** only applies to final answers not to intermediate steps.
- **Level of accuracy:** when this is not specified in the question the general rule applies: *unless otherwise stated in the question all numerical answers must be given exactly or correct to three significant figures.*

Candidates should be penalized **once only IN THE PAPER** for an accuracy error (**AP**). Award the marks as usual then write (**AP**) against the answer. On the **front** cover write  $-1(\text{AP})$ . Deduct 1 mark from the total for the paper, not the question.

- If a final correct answer is incorrectly rounded, apply the **AP**.
- If the level of accuracy is not specified in the question, apply the **AP** for correct answers not given to three significant figures.

**If there is no working shown**, and answers are given to the correct two significant figures, apply the **AP**. However, do **not** accept answers to one significant figure without working.

## 11 Crossed out work

If a candidate has drawn a line through work on their examination script, or in some other way crossed out their work, do not award any marks for that work.

**SECTION A**

1. (a) (i)  $P(A \cup B) = P(A) + P(B) = 0.7$  *AI*

(ii)  $P(A \cup B) = P(A) + P(B) - P(A \cap B)$  *(MI)*  
 $= P(A) + P(B) - P(A)P(B)$  *(MI)*  
 $= 0.3 + 0.4 - 0.12 = 0.58$  *AI*

(b)  $P(A \cap B) = P(A) + P(B) - P(A \cup B)$   
 $= 0.3 + 0.4 - 0.6 = 0.1$  *AI*

$P(A|B) = \frac{P(A \cap B)}{P(B)}$  *(MI)*

$= \frac{0.1}{0.4} = 0.25$  *AI*

[7 marks]

2. **METHOD 1**

$z = (2-i)(z+2)$  *MI*  
 $= 2z + 4 - iz - 2i$   
 $z(1-i) = -4 + 2i$

$z = \frac{-4 + 2i}{1-i}$  *AI*

$z = \frac{-4 + 2i}{1-i} \times \frac{1+i}{1+i}$  *MI*

$= -3 - i$  *AI*

**METHOD 2**

let  $z = a + ib$

$\frac{a + ib}{a + ib + 2} = 2 - i$  *MI*

$a + ib = (2-i)((a+2) + ib)$

$a + ib = 2(a+2) + 2bi - i(a+2) + b$

$a + ib = 2a + b + 4 + (2b - a - 2)i$

attempt to equate real and imaginary parts *MI*

$a = 2a + b + 4 (\Rightarrow a + b + 4 = 0)$

and  $b = 2b - a - 2 (\Rightarrow -a + b - 2 = 0)$  *AI*

Note: Award **AI** for two correct equations.

$b = -1; a = -3$  *AI*

$z = -3 - i$

[4 marks]

3. (a)  $u_1 = 27$   
 $\frac{81}{2} = \frac{27}{1-r}$  *MI*  
 $r = \frac{1}{3}$  *AI*

(b)  $v_2 = 9$   
 $v_4 = 1$   
 $2d = -8 \Rightarrow d = -4$  *(AI)*  
 $v_1 = 13$  *(AI)*

$\frac{N}{2}(2 \times 13 - 4(N-1)) > 0$  (accept equality) *MI*

$\frac{N}{2}(30 - 4N) > 0$

$N(15 - 2N) > 0$

$N < 7.5$  *(MI)*

$N = 7$  *AI*

**Note:**  $13 + 9 + 5 + 1 - 3 - 7 - 11 > 0 \Rightarrow N = 7$  or equivalent receives full marks.

[7 marks]

4. (a)  $\vec{AB} = \mathbf{b} - \mathbf{a}$  *AI*  
 $\vec{CB} = \mathbf{a} + \mathbf{b}$  *AI*

(b)  $\vec{AB} \cdot \vec{CB} = (\mathbf{b} - \mathbf{a}) \cdot (\mathbf{b} + \mathbf{a})$  *MI*  
 $= |\mathbf{b}|^2 - |\mathbf{a}|^2$  *AI*  
 $= 0$  since  $|\mathbf{b}| = |\mathbf{a}|$  *RI*

**Note:** Only award the *AI* and *RI* if working indicates that they understand that they are working with vectors.

so  $\vec{AB}$  is perpendicular to  $\vec{CB}$  i.e.  $\hat{A}BC$  is a right angle *AG*

[5 marks]

5. (a)  $\frac{\sin 2\theta}{1 + \cos 2\theta} = \frac{2 \sin \theta \cos \theta}{1 + 2 \cos^2 \theta - 1}$  *MI*

**Note:** Award *MI* for use of double angle formulae.

$$= \frac{2 \sin \theta \cos \theta}{2 \cos^2 \theta} \quad \text{AI}$$

$$= \frac{\sin \theta}{\cos \theta} \quad \text{AG}$$

$$= \tan \theta$$

(b)  $\tan \frac{\pi}{8} = \frac{\sin \frac{\pi}{4}}{1 + \cos \frac{\pi}{4}}$  *(MI)*

$$\cot \frac{\pi}{8} = \frac{1 + \cos \frac{\pi}{4}}{\sin \frac{\pi}{4}} \quad \text{MI}$$

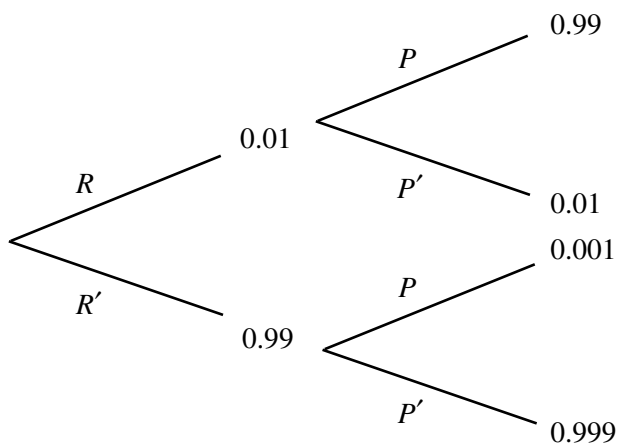
$$= \frac{1 + \frac{\sqrt{2}}{2}}{\frac{\sqrt{2}}{2}}$$

$$= 1 + \sqrt{2} \quad \text{AI}$$

*[5 marks]*



6.  $R$  is 'rabbit with the disease'  
 $P$  is 'rabbit testing positive for the disease'



(a)  $P(P) = P(R \cap P) + P(R' \cap P)$   
 $= 0.01 \times 0.99 + 0.99 \times 0.001$   
 $= 0.01089 (= 0.0109)$

**MI**  
**AI**

**Note:** Award **MI** for a correct tree diagram with correct probability values shown.

(b)  $P(R' | P) = \frac{0.001 \times 0.99}{0.001 \times 0.99 + 0.01 \times 0.99} \left( = \frac{0.00099}{0.01089} \right)$   
 $\frac{0.00099}{0.01089} < \frac{0.001}{0.01} = 10\%$  (or other valid argument)

**MI AI**  
**RI**

[5 marks]

**7. METHOD 1**

$$\text{area} = \int_0^{\sqrt{3}} \arctan x \, dx \quad \text{AI}$$

attempting to integrate by parts *MI*

$$= [x \arctan x]_0^{\sqrt{3}} - \int_0^{\sqrt{3}} x \frac{1}{1+x^2} \, dx \quad \text{AIAI}$$

$$= [x \arctan x]_0^{\sqrt{3}} - \left[ \frac{1}{2} \ln(1+x^2) \right]_0^{\sqrt{3}} \quad \text{AI}$$

**Note:** Award *AI* even if limits are absent.

$$= \frac{\pi}{\sqrt{3}} - \frac{1}{2} \ln 4 \quad \text{AI}$$

$$\left( = \frac{\pi\sqrt{3}}{3} - \ln 2 \right)$$

**METHOD 2**

$$\text{area} = \frac{\pi\sqrt{3}}{3} - \int_0^{\frac{\pi}{3}} \tan y \, dy \quad \text{MIAIAI}$$

$$= \frac{\pi\sqrt{3}}{3} + [\ln|\cos y|]_0^{\frac{\pi}{3}} \quad \text{MIAI}$$

$$= \frac{\pi\sqrt{3}}{3} + \ln \frac{1}{2} \quad \left( = \frac{\pi\sqrt{3}}{3} - \ln 2 \right) \quad \text{AI}$$

**[6 marks]**

8. (a) (i)  $(g \circ f)(x) = \frac{1}{2x+3}, x \neq -\frac{3}{2}$  (or equivalent) *AI*

(ii)  $(f \circ g)(x) = \frac{2}{x} + 3, x \neq 0$  (or equivalent) *AI*

(b) **EITHER**

$f(x) = (g^{-1} \circ f \circ g)(x) \Rightarrow (g \circ f)(x) = (f \circ g)(x)$  *(MI)*

$\frac{1}{2x+3} = \frac{2}{x} + 3$  *AI*

**OR**

$(g^{-1} \circ f \circ g)(x) = \frac{1}{\frac{2}{x} + 3}$  *AI*

$2x+3 = \frac{1}{\frac{2}{x} + 3}$  *MI*

**THEN**

$6x^2 + 12x + 6 = 0$  (or equivalent) *AI*

$x = -1, y = 1$  (coordinates are  $(-1, 1)$ ) *AI*

*[6 marks]*

9. attempt at implicit differentiation *MI*

$e^{(x+y)} \left( 1 + \frac{dy}{dx} \right) = -\sin(xy) \left( x \frac{dy}{dx} + y \right)$  *AIAI*

let  $x = 0, y = 0$  *MI*

$e^0 \left( 1 + \frac{dy}{dx} \right) = 0$

$\frac{dy}{dx} = -1$  *AI*

let  $x = \sqrt{2\pi}, y = -\sqrt{2\pi}$

$e^0 \left( 1 + \frac{dy}{dx} \right) = -\sin(-2\pi) \left( x \frac{dy}{dx} + y \right) = 0$

so  $\frac{dy}{dx} = -1$  *AI*

since both points lie on the line  $y = -x$  this is a common tangent *RI*

**Note:**  $y = -x$  must be seen for the final *RI*. It is not sufficient to note that the gradients are equal.

*[7 marks]*

10. (a)  $f(x-a) \neq b$  (M1)  
 $x \neq 0$  and  $x \neq 2a$  (or equivalent) AI

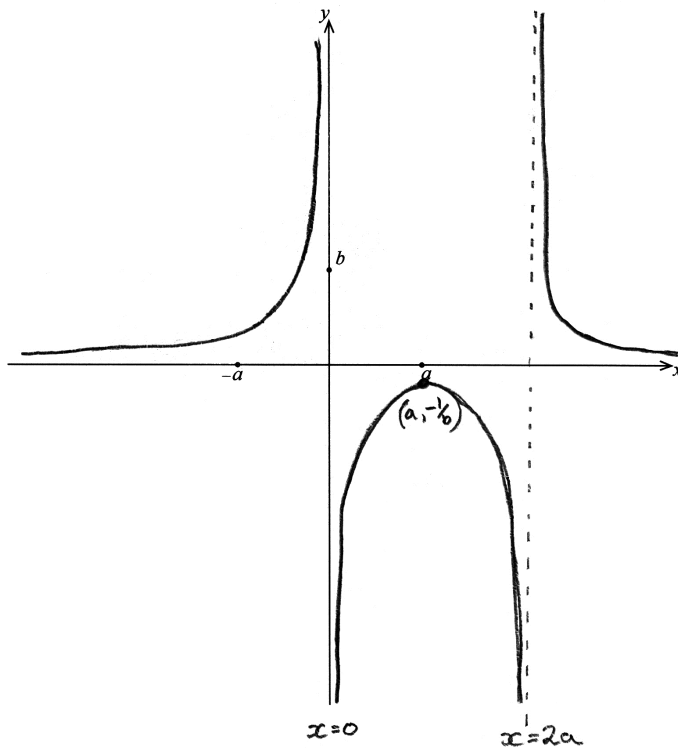
(b) vertical asymptotes  $x=0, x=2a$  AI  
horizontal asymptote  $y=0$  AI

**Note:** Equations must be seen to award these marks.

maximum  $\left(a, -\frac{1}{b}\right)$  AIAI

**Note:** Award AI for correct x-coordinate and AI for correct y-coordinate.

one branch correct shape AI  
other 2 branches correct shape AI



[8 marks]

SECTION B

11. (a)  $\vec{AB} = \begin{pmatrix} -4 \\ -1 \\ 3 \end{pmatrix}, \vec{AC} = \begin{pmatrix} 4 \\ -3 \\ 1 \end{pmatrix}$

A1A1

<b>Note:</b> Accept row vectors.
----------------------------------

[2 marks]

(b)  $\vec{AB} \times \vec{AC} = \begin{vmatrix} i & j & k \\ -4 & -1 & 3 \\ 4 & -3 & 1 \end{vmatrix} = \begin{pmatrix} 8 \\ 16 \\ 16 \end{pmatrix}$

M1A1

normal  $n = \begin{pmatrix} 1 \\ 2 \\ 2 \end{pmatrix}$  so  $r \cdot \begin{pmatrix} 1 \\ 2 \\ 2 \end{pmatrix} = \begin{pmatrix} 1 \\ 2 \\ 1 \end{pmatrix} \cdot \begin{pmatrix} 1 \\ 2 \\ 2 \end{pmatrix}$

(M1)

$x + 2y + 2z = 7$

A1

<b>Note:</b> If attempt to solve by a system of equations: Award <b>A1</b> for 3 correct equations, <b>A1</b> for eliminating a variable and <b>A2</b> for the correct answer.
---

[4 marks]

(c)  $r = \begin{pmatrix} 5 \\ 3 \\ 7 \end{pmatrix} + \lambda \begin{pmatrix} 1 \\ 2 \\ 2 \end{pmatrix}$  (or equivalent)

A1

$1(5 + \lambda) + 2(3 + 2\lambda) + 2(7 + 2\lambda) = 7$

M1

$9\lambda = -18$

$\lambda = -2$

A1

<b>Note:</b> $\lambda = -\frac{1}{4}$ if $\begin{pmatrix} 8 \\ 16 \\ 16 \end{pmatrix}$ is used.
---

distance =  $2\sqrt{1^2 + 2^2 + 2^2}$   
= 6

(M1)

A1

[5 marks]

continued ...

Question 11 continued

(d) (i)  $\text{area} = \frac{1}{2} \left| \vec{AB} \times \vec{AC} \right| = \frac{1}{2} \sqrt{8^2 + 16^2 + 16^2}$  *(M1)*  
 $= 12$  (accept  $\frac{1}{2} \sqrt{576}$ ) *A1*

(ii) **EITHER**

$\text{volume} = \frac{1}{3} \times \text{area} \times \text{height}$  *(M1)*  
 $= \frac{1}{3} \times 12 \times 6 = 24$  *A1*

**OR**

$\text{volume} = \frac{1}{6} \left( \vec{AD} \cdot (\vec{AB} \times \vec{AC}) \right)$  *M1*  
 $= 24$  *A1*

[4 marks]

(e)  $\left| \vec{AB} \times \vec{AC} \right| = \sqrt{8^2 + 16^2 + 16^2}$   
 $\left| \vec{AC} \times \vec{AD} \right| = \begin{vmatrix} i & j & k \\ 4 & -3 & 1 \\ 4 & 1 & 6 \end{vmatrix}$  *M1*  
 $= \left| -19i - 20j + 16k \right|$  *A1*

**EITHER**

$\frac{1}{2} \sqrt{19^2 + 20^2 + 16^2} > \frac{1}{2} \sqrt{8^2 + 16^2 + 16^2}$  *M1*

therefore since area of ACD bigger than area ABC implies that B is closer to opposite face than D *R1*

**OR**

correct calculation of second distance as  $\frac{144}{\sqrt{19^2 + 20^2 + 16^2}}$  *A1*  
 which is smaller than 6 *R1*

**Note:** Only award final *R1* in each case if the calculations are correct.

[4 marks]

Total [19 marks]

12. (a) (i)  $f'(x) = \frac{x^{\frac{1}{2}} - \ln x}{x^2}$  *MIAI*  
 $= \frac{1 - \ln x}{x^2}$

so  $f'(x) = 0$  when  $\ln x = 1$ , i.e.  $x = e$  *AI*

(ii)  $f'(x) > 0$  when  $x < e$  and  $f'(x) < 0$  when  $x > e$  *RI*  
hence local maximum *AG*

**Note:** Accept argument using correct second derivative.

(iii)  $y \leq \frac{1}{e}$  *AI*

[5 marks]

(b)  $f''(x) = \frac{x^2 \frac{-1}{x} - (1 - \ln x) 2x}{x^4}$  *MI*  
 $= \frac{-x - 2x + 2x \ln x}{x^4}$   
 $= \frac{-3 + 2 \ln x}{x^3}$  *AI*

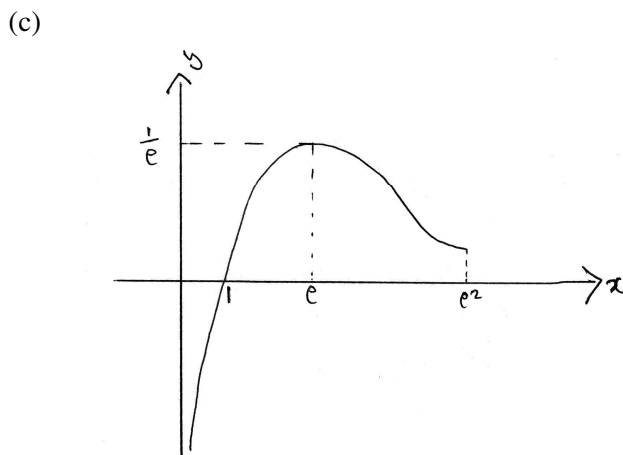
**Note:** May be seen in part (a).

$f''(x) = 0$  *(MI)*  
 $-3 + 2 \ln x = 0$   
 $x = e^{\frac{3}{2}}$

since  $f''(x) < 0$  when  $x < e^{\frac{3}{2}}$  and  $f''(x) > 0$  when  $x > e^{\frac{3}{2}}$  *RI*

then point of inflexion  $\left( e^{\frac{3}{2}}, \frac{3}{2e^{\frac{3}{2}}} \right)$  *AI*

[5 marks]



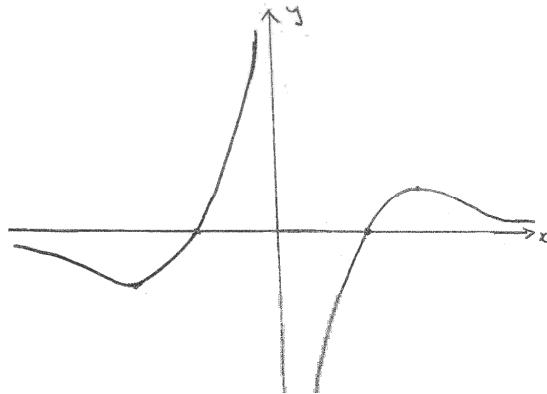
*AIAIAI*

**Note:** Award *AI* for the maximum and intercept, *AI* for a vertical asymptote and *AI* for shape (including turning concave up).

[3 marks]  
continued ...

Question 12 continued

(d) (i)



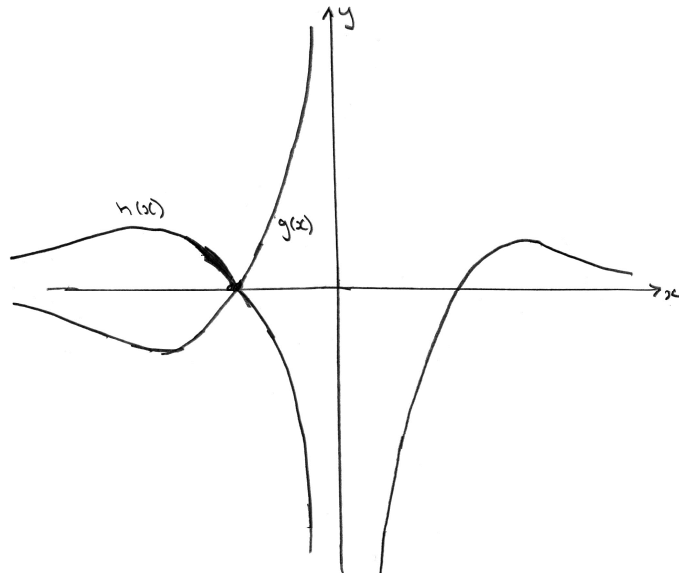
*AI*

**Note:** Award *AI* for each correct branch.

(ii) all real values

*AI*

(iii)



*(MI)(AI)*

**Note:** Award *(MI)(AI)* for sketching the graph of *h*, ignoring any graph of *g*.

$-e^2 < x < -1$  (accept  $x < -1$ )

*AI*

*[6 marks]*

*Total [19 marks]*



13. (a)  $(\cos \theta + i \sin \theta)^3 = \cos^3 \theta + 3 \cos^2 \theta (i \sin \theta) + 3 \cos \theta (i \sin \theta)^2 + (i \sin \theta)^3$  (M1)  
 $= \cos^3 \theta - 3 \cos \theta \sin^2 \theta + i(3 \cos^2 \theta \sin \theta - \sin^3 \theta)$  AI

[2 marks]

(b) from De Moivre's theorem  
 $(\cos \theta + i \sin \theta)^3 = \cos 3\theta + i \sin 3\theta$  (M1)  
 $\cos 3\theta + i \sin 3\theta = (\cos^3 \theta - 3 \cos \theta \sin^2 \theta) + i(3 \cos^2 \theta \sin \theta - \sin^3 \theta)$   
 equating real parts MI  
 $\cos 3\theta = \cos^3 \theta - 3 \cos \theta \sin^2 \theta$   
 $= \cos^3 \theta - 3 \cos \theta (1 - \cos^2 \theta)$  AI  
 $= \cos^3 \theta - 3 \cos \theta + 3 \cos^3 \theta$   
 $= 4 \cos^3 \theta - 3 \cos \theta$  AG

**Note:** Do not award marks if part (a) is not used.

[3 marks]

(c)  $(\cos \theta + i \sin \theta)^5 =$   
 $\cos^5 \theta + 5 \cos^4 \theta (i \sin \theta) + 10 \cos^3 \theta (i \sin \theta)^2 + 10 \cos^2 \theta (i \sin \theta)^3 + 5 \cos \theta (i \sin \theta)^4 + (i \sin \theta)^5$  (A1)  
 from De Moivre's theorem  
 $\cos 5\theta = \cos^5 \theta - 10 \cos^3 \theta \sin^2 \theta + 5 \cos \theta \sin^4 \theta$  MI  
 $= \cos^5 \theta - 10 \cos^3 \theta (1 - \cos^2 \theta) + 5 \cos \theta (1 - \cos^2 \theta)^2$  AI  
 $= \cos^5 \theta - 10 \cos^3 \theta + 10 \cos^5 \theta + 5 \cos \theta - 10 \cos^3 \theta + 5 \cos^5 \theta$   
 $\therefore \cos 5\theta = 16 \cos^5 \theta - 20 \cos^3 \theta + 5 \cos \theta$  AG

**Note:** If compound angles used in (b) and (c), then marks can be allocated in (c) only.

[3 marks]

(d)  $\cos 5\theta + \cos 3\theta + \cos \theta$   
 $= (16 \cos^5 \theta - 20 \cos^3 \theta + 5 \cos \theta) + (4 \cos^3 \theta - 3 \cos \theta) + \cos \theta = 0$  MI  
 $16 \cos^5 \theta - 16 \cos^3 \theta + 3 \cos \theta = 0$  AI  
 $\cos \theta (16 \cos^4 \theta - 16 \cos^2 \theta + 3) = 0$   
 $\cos \theta (4 \cos^2 \theta - 3)(4 \cos^2 \theta - 1) = 0$  AI  
 $\therefore \cos \theta = 0; \pm \frac{\sqrt{3}}{2}; \pm \frac{1}{2}$  AI  
 $\therefore \theta = \pm \frac{\pi}{6}; \pm \frac{\pi}{3}; \pm \frac{\pi}{2}$  A2

[6 marks]

continued...

Question 13 continued

(e)  $\cos 5\theta = 0$

$5\theta = \dots, \frac{\pi}{2}; \left(\frac{3\pi}{2}, \frac{5\pi}{2}\right); \frac{7\pi}{2}; \dots$  (M1)

$\theta = \dots, \frac{\pi}{10}; \left(\frac{3\pi}{10}, \frac{5\pi}{10}\right); \frac{7\pi}{10}; \dots$  (M1)

**Note:** These marks can be awarded for verifications later in the question.

now consider  $16\cos^5 \theta - 20\cos^3 \theta + 5\cos \theta = 0$  MI

$\cos \theta (16\cos^4 \theta - 20\cos^2 \theta + 5) = 0$

$\cos^2 \theta = \frac{20 \pm \sqrt{400 - 4(16)(5)}}{32}; \cos \theta = 0$  AI

$\cos \theta = \pm \sqrt{\frac{20 \pm \sqrt{400 - 4(16)(5)}}{32}}$

$\cos \frac{\pi}{10} = \sqrt{\frac{20 + \sqrt{400 - 4(16)(5)}}{32}}$  since max value of cosine  $\Rightarrow$  angle closest to zero RI

$\cos \frac{\pi}{10} = \sqrt{\frac{4.5 + 4\sqrt{25 - 4(5)}}{4.8}} = \sqrt{\frac{5 + \sqrt{5}}{8}}$  AI

$\cos \frac{7\pi}{10} = -\sqrt{\frac{5 - \sqrt{5}}{8}}$  AIAI

[8 marks]

Total [22 marks]