



MARKSCHEME

May 2006

MATHEMATICS

Higher Level

Paper 1

*This markscheme is **confidential** and for the exclusive use of examiners in this examination session.*

*It is the property of the International Baccalaureate and must **not** be reproduced or distributed to any other person without the authorization of IBCA.*

Instructions to Examiners

Abbreviations

- M** Marks awarded for attempting to use a correct **Method**; working must be seen.
- (M)** Marks awarded for **Method**; may be implied by **correct** subsequent working.
- A** Marks awarded for an **Answer** or for **Accuracy**: often dependent on preceding **M** marks.
- (A)** Marks awarded for an **Answer** or for **Accuracy**; may be implied by **correct** subsequent working.
- R** Marks awarded for clear **Reasoning**.
- N** Marks awarded for **correct** answers if **no** working shown (or working which gains no other marks).
- AG** Answer given in the question and so no marks are awarded.

Using the markscheme

1 General

Write the marks in red on candidates' scripts, in the right hand margin.

- Show the **breakdown** of individual marks awarded using the abbreviations **MI**, **AI**, etc.
- Write down the total for each **question** (at the end of the question) and **circle** it.

2 Method and Answer/Accuracy marks

- Do **not** automatically award full marks for a correct answer; all working **must** be checked, and marks awarded according to the markscheme.
- It is not possible to award **M0** followed by **AI**, as **A** mark(s) depend on the preceding **M** mark(s), if any.
- Where **M** and **A** marks are noted on the same line, e.g. **MIAI**, this usually means **MI** for an **attempt** to use an appropriate method (e.g. substitution into a formula) and **AI** for using the **correct** values.
- Where the markscheme specifies **(M2)**, **N3**, etc., do **not** split the marks.
- Once a correct answer to a question or part-question is seen, ignore further working.

3 N marks

*Award N marks for **correct** answers where there is **no** working, (or working which gains no other marks).*

- Do **not** award a mixture of **N** and other marks.
- There may be fewer **N** marks available than the total of **M**, **A** and **R** marks; this is deliberate as it penalizes candidates for not following the instruction to show their working.
- For consistency within the markscheme, **N** marks are noted for every part, even when these match the mark breakdown. In these cases, the marks may be recorded in either form e.g. **A2** or **N2**.

4 Implied marks

*Implied marks appear in **brackets e.g. (M1)**, and can only be awarded if **correct** work is seen or if implied in subsequent working.*

- Normally the correct work is seen or implied in the next line.
- Marks **without** brackets can only be awarded for work that is **seen**.

5 Follow through marks

*Follow through (**FT**) marks are awarded where an incorrect answer from one **part** of a question is used correctly in **subsequent** part(s). To award **FT** marks, **there must be working present** and not just a final answer based on an incorrect answer to a previous part.*

- If the question becomes much simpler because of an error then use discretion to award fewer **FT** marks.
- If the error leads to an inappropriate value (e.g. $\sin \theta = 1.5$), do not award the mark(s) for the final answer(s).
- Within a question part, once an error is made, no further **dependent A** marks can be awarded, but **M** marks may be awarded if appropriate.
- Exceptions to this rule will be explicitly noted on the markscheme.

6 Mis-read

*If a candidate incorrectly copies information from the question, this is a mis-read (**MR**). Apply a **MR** penalty of 1 mark to that question. Award the marks as usual and then write $-1(\mathbf{MR})$ next to the total. Subtract 1 mark from the total for the question. A candidate should be penalised only once for a particular mis-read.*

- If the question becomes much simpler because of the **MR**, then use discretion to award fewer marks.
- If the **MR** leads to an inappropriate value (e.g. $\sin \theta = 1.5$), do not award the mark(s) for the final answer(s).

7 Discretionary marks (**d**)

*An examiner uses discretion to award a mark on the rare occasions when the markscheme does not cover the work seen. The mark should be labelled (**d**) and a brief **note** written next to the mark explaining this decision.*

8 Alternative methods

Candidates will sometimes use methods other than those in the markscheme. Unless the question specifies a method, other correct methods should be marked in line with the markscheme. If in doubt, contact your team leader for advice.

- Alternative methods for complete questions are indicated by **METHOD 1**, **METHOD 2**, etc.
- Alternative solutions for part-questions are indicated by **EITHER . . . OR**.
- Where possible, alignment will also be used to assist examiners in identifying where these alternatives start and finish.

9 Alternative forms

Unless the question specifies otherwise, **accept** equivalent forms.

- As this is an international examination, accept all alternative forms of **notation**.
- In the markscheme, equivalent **numerical** and **algebraic** forms will generally be written in brackets immediately following the answer.
- In the markscheme, **simplified** answers, (which candidates often do not write in examinations), will generally appear in brackets. Marks should be awarded for either the form preceding the bracket or the form in brackets (if it is seen).

Example: for differentiating $f(x) = 2\sin(5x - 3)$, the markscheme gives:

$$f'(x) = (2\cos(5x - 3))5 \quad (=10\cos(5x - 3)) \quad \mathbf{AI}$$

Award **AI** for $(2\cos(5x - 3))5$, even if $10\cos(5x - 3)$ is not seen.

10 Accuracy of Answers

If the level of accuracy is specified in the question, a mark will be allocated for giving the answer to the required accuracy.

- **Rounding errors:** only applies to final answers not to intermediate steps.
- **Level of accuracy:** when this is not specified in the question the general rule applies: *unless otherwise stated in the question all numerical answers must be given exactly or correct to three significant figures.*

Candidates should be penalized **once only IN THE PAPER** for an accuracy error (**AP**). Award the marks as usual then write (**AP**) against the answer. On the **front** cover write $-1(\mathbf{AP})$. Deduct 1 mark from the total for the paper, not the question.

- If a final correct answer is incorrectly rounded, apply the **AP**.
- If the level of accuracy is not specified in the question, apply the **AP** for correct answers not given to three significant figures.

If there is no working shown, and answers are given to the correct two significant figures, apply the **AP**. However, do **not** accept answers to one significant figure without working.

11 Crossed out work

If a candidate has drawn a line through work on their examination script, or in some other way crossed out their work, do not award any marks for that work.

12 Examples

Exemplar material is available under examiner training on <http://courses.triplelearning.co.uk>. Please refer to this material before you start marking, and when you have any queries. Please also feel free to contact your Team Leader if you need further advice.

QUESTION 1

- Using $u_2 = u_1 + d$ *(M1)*
 $\Rightarrow u_1 + d = 7$ *A1*
 Using $S_5 = \frac{5}{2}(2u_1 + 4d) = 50$ *(M1)*
 $\Rightarrow 2u_1 + 4d = 20$ *A1*
 Attempting to solve *(M1)*
 $d = 3$ *A1*

N3

Note: Special case: $u_2 = 7, S_5 = 50 \Rightarrow u_3 = 10 \Rightarrow d = 3$ gains full marks.

QUESTION 2

- (a) $|z_2| = \sqrt{1+3} = 2$ $\arg z_2 = \arctan \sqrt{3} = \frac{\pi}{3}$ *(A1)(A1)*
 $\Rightarrow z_2 = 2\left(\cos \frac{\pi}{3} + i \sin \frac{\pi}{3}\right)$ *A1*
 (accept $2e^{i\frac{\pi}{3}}, 2e^{1.05i}$)

Note: Accept 60° throughout.

- (b) $|z_1 z_2^3| = |z_1| \times |z_2|^3$ or any alternate method *(M1)*
 $r \times 8 = 2$ *A1*
 $r = \frac{1}{4}$ *A1*

N2

QUESTION 3

- $y = 2(x-2)^2 + 4(x-2) + 7 - 1$ *M1A1A1*
 $= 2(x^2 - 4x + 4) + 4x - 8 + 6$ *(A1)*
 $= 2x^2 - 8x + 8 + 4x - 2$ *(A1)*
 $\Rightarrow y = 2x^2 - 4x + 6$ *A1*

N3

Note: Award *M1A1A0(A1)FT(A1)FTAIFT* for either $2x^2 + 12x + 22$ from substituting $(x+2)$ or $2x^2 - 4x + 8$ from adding 1.
 Award *M1A0A0A0A0A0* for $y = 2(x+2)^2 + 4(x+2) + 7 + 1$.

QUESTION 4

METHOD 1

Line and graph intersect when $3x^2 - x + 4 = mx + 1$ *MI*
i.e. $3x^2 - (1+m)x + 3 = 0$ *(AI)*
 $y = mx + 1$ tangent to graph \Rightarrow
 $3x^2 - (1+m)x + 3 = 0$ has equal roots *(MI)*
i.e. $b^2 - 4ac = 0$ *(AI)*
 $\Rightarrow (1+m)^2 - 36 = 0$ *AI*
 $\Rightarrow m = 5, m = -7$ *AI* *N3*

METHOD 2

$f'(x) = 6x - 1$ *AI*
 $3x^2 - x + 4 = mx + 1$ *(MI)*
 Substitute $m = 6x - 1$ into above *MI*
 $3x^2 - 6x^2 + 3 = 0$ *(AI)*
 $\Rightarrow x = \pm 1$ *AI*
 $\Rightarrow m = 5, m = -7$ *AI* *N3*

QUESTION 5

$(x - 1)$ is a factor of $P(x) \Rightarrow P(1) = 0$ *(MI)*
 $\Rightarrow a + b = 2$ *AI*
 $(x + 3)$ is a factor of $P(x) \Rightarrow P(-3) = 0$ *(MI)*
 $\Rightarrow 9a + b = 42$ *AI*
 Solving $\Rightarrow a = 5, b = -3$ *(MI)AI* *N4*

QUESTION 6

(a) Median = 11 (accept any values in range 11 to 11.5 inclusive) *AI*

(b)

| Height | Frequency | |
|------------------|-----------|-----------|
| $0 \leq h < 5$ | 4 | |
| $5 \leq h < 10$ | 9 | |
| $10 \leq h < 15$ | 8 | <i>AI</i> |
| $15 \leq h < 20$ | 5 | <i>AI</i> |
| $20 \leq h < 25$ | 4 | <i>AI</i> |

(c) Using mid values in calculation of the mean *MI*
 $\left(= \frac{355}{30} \right) = 11.8\dot{3} \quad (= 11.8)$ *AI* *NI*

QUESTION 7**METHOD 1**

$$\frac{\sin 50^\circ}{8.71} = \frac{\sin \hat{B}}{10.9} \quad (M1)$$

$$\sin \hat{B} = 0.958(65\dots) \quad (A1)$$

Finding the obtuse value of \hat{B} from the range 106 to 107 *MI*

Finding \hat{C} from the range 23 to 24 *(MI)*

$$\text{Area ABC} = \frac{1}{2} \times 10.9 \times 8.71 \times \sin \hat{C} \quad (M1)$$

$$= 18.9 \text{ (cm}^2\text{)} \quad (A1) \quad (N0)$$

METHOD 2

Using cosine rule *(MI)*

$$8.71^2 = AB^2 + 10.9^2 - 2AB \times 10.9 \cos 50^\circ \quad (A1)$$

Solving a quadratic in AB *(MI)*

choosing $AB = 4.52(7\dots)$ *MI*

$$\text{Area triangle ABC} = \frac{1}{2} \times 10.9 \times AB \sin 50^\circ \quad (M1)$$

$$= 18.9 \text{ (cm}^2\text{)} \quad (A1) \quad (N0)$$

QUESTION 8

For writing $P(W < 220) = 0.88$ or sketching an appropriate diagram *A1*

$$z = 1.17(499\dots) \quad (\text{accept } 1.17 \text{ or } 1.18) \quad (A2)$$

Using $z = \frac{x - \mu}{\sigma}$ *(MI)*

$$z = \frac{220 - 200}{\sigma} \quad (A1)$$

$$\Rightarrow \sigma = 17.0 \text{ (grams)} \quad (\text{accept } 16.9 \text{ or } 17.1) \quad (A1) \quad (N3)$$

QUESTION 9

Finding two equations *MI*

Correct equations $\ln(x+3) = 1$, $\ln(x+3) = -1$ *(A1)*

$$\ln(x+3) = 1 \Rightarrow x = e - 3 \quad (M1)A1 \quad (N2)$$

$$\ln(x+3) = -1 \Rightarrow x = \frac{1}{e} - 3 \quad (= e^{-1} - 3) \quad (M1)A1 \quad (N2)$$

| |
|--|
| Note: Award <i>M1A0</i> for decimal answer. |
|--|

QUESTION 10

Attempting to find point of intersection
 Intersection at $x = 2$

(M1)
 (A1)

Note: Award *M1A1* if $x = 2$ is seen as upper limit of an integral.

Using appropriate definite integrals
 Area = 1.66

M2
 A2 N2

QUESTION 11

(a) $a \times b = \begin{vmatrix} i & j & k \\ 2 & 1 & 0 \\ -1 & p & 6 \end{vmatrix}$
 $= 6i - 12j + (2p + 1)k$

(M1)(A1)

 A1 N3

(b) **METHOD 1**

$a \times b$ parallel to $c \Rightarrow$
 $\begin{pmatrix} 6 \\ -12 \\ 2p+1 \end{pmatrix} = k \begin{pmatrix} 2 \\ -4 \\ 3 \end{pmatrix}$
 $k = 3$
 $\Rightarrow p = 4$

M1

 (A1)
 A1 N2

METHOD 2

b perpendicular to $c \Rightarrow$
 $\begin{pmatrix} -1 \\ p \\ 6 \end{pmatrix} \cdot \begin{pmatrix} 2 \\ -4 \\ 3 \end{pmatrix} = 0$
 $-2 - 4p + 18 = 0$
 $\Rightarrow p = 4$

M1

 (A1)
 A1 N2

QUESTION 12

METHOD 1

$$\int e^{2x} \sin x \, dx = -e^{2x} \cos x + 2 \int e^{2x} \cos x \, dx \quad (M1)A1$$

$$= -e^{2x} \cos x + 2(e^{2x} \sin x - 2 \int e^{2x} \sin x \, dx) \quad (M1)A1$$

$$= -e^{2x} \cos x + 2e^{2x} \sin x - 4 \int e^{2x} \sin x \, dx$$

$$\Rightarrow 5 \int e^{2x} \sin x \, dx = e^{2x} (2 \sin x - \cos x) \quad (M1)$$

$$\int e^{2x} \sin x \, dx = \frac{e^{2x}}{5} (2 \sin x - \cos x) + C \quad A1 \quad N0$$

METHOD 2

$$\int e^{2x} \sin x \, dx = \frac{1}{2} e^{2x} \sin x - \frac{1}{2} \int e^{2x} \cos x \, dx \quad (M1)A1$$

$$= \frac{1}{2} e^{2x} \sin x - \frac{1}{4} \int e^{2x} \cos x - \frac{1}{4} \int e^{2x} \sin x \, dx \quad (M1)A1$$

$$\Rightarrow \frac{5}{4} \int e^{2x} \sin x \, dx = \frac{1}{2} e^{2x} \sin x - \frac{1}{4} e^{2x} \cos x \quad (M1)$$

$$\int e^{2x} \sin x \, dx = \frac{e^{2x}}{5} (2 \sin x - \cos x) + C \quad A1$$

Note: Do not penalize the absence of constants of integration.

QUESTION 13

(a) $P(A \cap B) = P(A) \times P(B | A) \quad (M1)$

$$= \frac{1}{5} \times \frac{1}{4} \left(= \frac{1}{20} \right) \quad A1 \quad N2$$

(b) $P(A \cup B) = P(A) + P(B) - P(A \cap B) \quad (M1)$

$$\Rightarrow P(B) = \frac{7}{10} - \frac{1}{5} + \frac{1}{20}$$

$$= \frac{11}{20} \quad A1 \quad N2$$

(c) **METHOD 1**

$$P(B) = \frac{11}{20} \text{ and } P(B | A) = \frac{1}{4} \quad M1$$

$$P(B) \neq P(B | A) \quad R1$$

$\Rightarrow A$ and B are not independent **AG** **N0**

METHOD 2

$$P(A) \times P(B) = \frac{1}{5} \times \frac{11}{20} = \frac{11}{100} \text{ and } P(A \cap B) = \frac{1}{20} \quad M1$$

$$P(A \cap B) \neq P(A) \times P(B) \quad R1$$

$\Rightarrow A$ and B are not independent **AG** **N0**

QUESTION 14

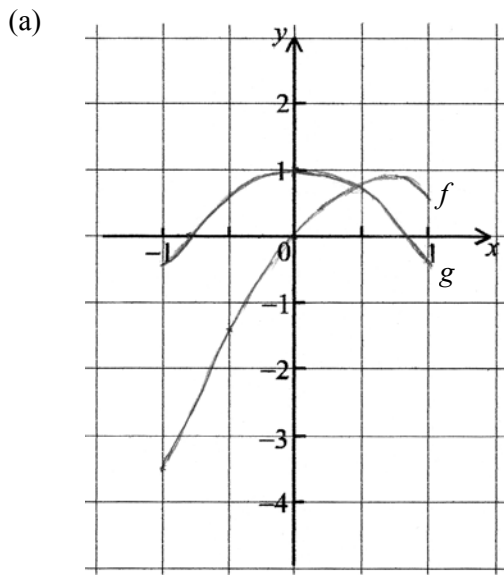
(a) $f'(x) = 3 \cos^2(4x+1) \times (-\sin(4x+1)) \times 4$ *AIAIAI*
 $f'(x) = -12 \cos^2(4x+1)(\sin(4x+1))$

Note: Award *A1* for $3 \cos^2(4x+1)$, *A1* for $-\sin(4x+1)$ and *A1* for 4.

(b) $f'(x) = 0 \Rightarrow \cos^2(4x+1) = 0$ or $\sin(4x+1) = 0$ *AIAIAI*
 $\Rightarrow x = \frac{\pi}{8} - \frac{1}{4}, x = \frac{3\pi}{8} - \frac{1}{4}$ or $x = \frac{\pi-1}{4}$

Note: Do not penalise the inclusion of additional answers.

QUESTION 15



AIAI

Note: Award *A0* for the graph of g if it goes significantly above 1.

(b) $x = 0.412$ *A2*

(c) Accept $[-0.416, 1]$ or $] -0.416, 1]$ or $[\cos 2, 1]$, $[\cos(-2), 1]$. *AIAI*

QUESTION 16

- (a) Let A be the number of accidents which occur in a day

Using a Poisson distribution in an inequality

MI

$$P(A > 2) = 1 - P(A \leq 2)$$

$$= 1 - e^{-1.5} \left(1 + 1.5 + \frac{1.5^2}{2} \right)$$

(AI)

$$= 0.191$$

AI

N2

- (b) $P(A \geq 1) = 1 - P(A = 0)$

$$= 0.776(869\dots)$$

(AI)

Indication of conditional probability as a ratio:

$$\frac{P(A > 2)}{P(A \geq 1)} \quad \text{or} \quad \frac{0.191(153\dots)}{0.776(869\dots)}$$

MI

$$P(A > 2 | A \geq 1) = 0.246$$

AI

NI

QUESTION 17

METHOD 1

- (a) $\det \mathbf{AB} = \det \mathbf{A} \times \det \mathbf{B} = (\det \mathbf{B})^2 \Rightarrow (7h + 9)^2 = 256h$

MIAI

$$\Rightarrow 49h^2 - 130h + 81 = 0$$

AG

N0

- (b) $49h^2 - 130h + 81 = 0 \Rightarrow h = 1$

AI

$$\det \mathbf{A} = \det \mathbf{B} \Rightarrow -2 - 6k = 7h + 9$$

(MI)

$$7h + 6k = -11$$

AI

$$\Rightarrow k = \frac{-11 - 7h}{6} = -3$$

AI

N0

METHOD 2

- (a) $\det \mathbf{A} = \det \mathbf{B} \Rightarrow -2 - 6k = 7h + 9$

$$7h + 6k = -11 \quad \text{or equivalent}$$

AI

$$\Rightarrow k = \frac{-11 - 7h}{6}$$

$$\det \mathbf{AB} = -42hk - 14h - 54k - 18$$

MIAI

$$\text{Substituting } k = \frac{-11 - 7h}{6} \text{ into } -42hk - 14h - 54k - 18 = 256h$$

AI

$$\Rightarrow 49h^2 - 130h + 81 = 0$$

AG

- (b) $h = 1$

AI

$$k = -3$$

AI

QUESTION 18

$$(\ln 3)3^{x+y} \left(1 + \frac{dy}{dx} \right) = 3x^2 + 3 \frac{dy}{dx}$$

(M1)A1A1A1

Note: Award *A1* for $(\ln 3)3^{x+y}$, *A1* for $\left(1 + \frac{dy}{dx} \right)$ and *A1* for $3x^2 + 3 \frac{dy}{dx}$.

$$\frac{dy}{dx} ((\ln 3)3^{x+y} - 3) = 3x^2 - (\ln 3)3^{x+y}$$

M1

$$\frac{dy}{dx} = \frac{3x^2 - (\ln 3)3^{x+y}}{(\ln 3)3^{x+y} - 3}$$

A1

N0

QUESTION 19

- (a) A recognition of a permutation of six from ten in words or symbols
Total number of ways = 151 200

(M1)

A1

N2

- (b) Total number of ways = $8 \times 3! \times 7 \times 6 \times 5$
= 10 080

A1A1A1

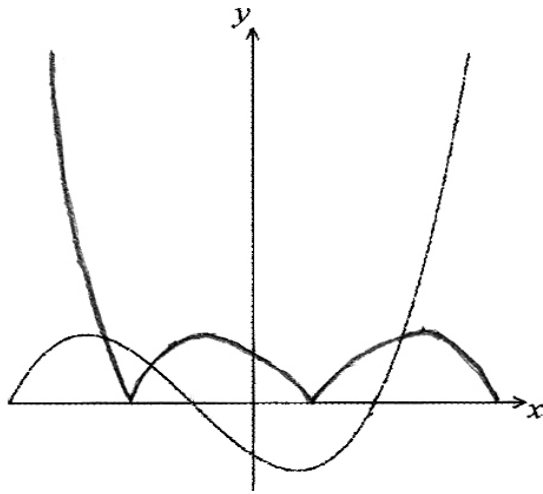
A1

N0

Note: Award *A1* for 8 *A1* for 3! and *A1* for $7 \times 6 \times 5$.

QUESTION 20

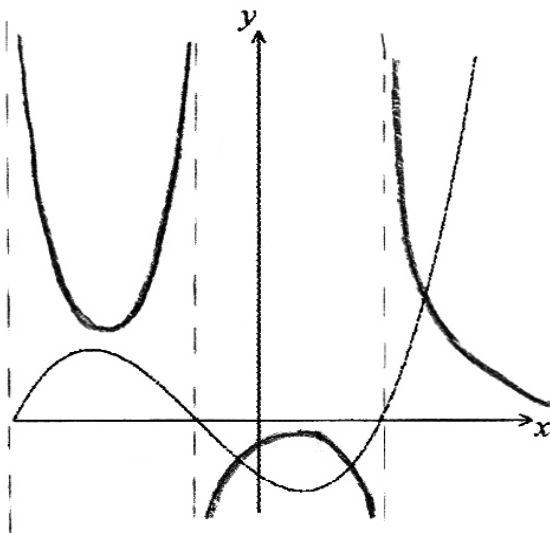
(a)



A1A1A1

Note: Award *A1* for each branch.

(b)



A1A1A1

Note: Award *A1* for each branch.
