

No part of this product may be reproduced in any form or by any electronic or mechanical means, including information storage and retrieval systems, without written permission from the IB.

Additionally, the license tied with this product prohibits commercial use of any selected files or extracts from this product. Use by third parties, including but not limited to publishers, private teachers, tutoring or study services, preparatory schools, vendors operating curriculum mapping services or teacher resource digital platforms and app developers, is not permitted and is subject to the IB's prior written consent via a license. More information on how to request a license can be obtained from <https://ibo.org/become-an-ib-school/ib-publishing/licensing/applying-for-a-license/>.

Aucune partie de ce produit ne peut être reproduite sous quelque forme ni par quelque moyen que ce soit, électronique ou mécanique, y compris des systèmes de stockage et de récupération d'informations, sans l'autorisation écrite de l'IB.

De plus, la licence associée à ce produit interdit toute utilisation commerciale de tout fichier ou extrait sélectionné dans ce produit. L'utilisation par des tiers, y compris, sans toutefois s'y limiter, des éditeurs, des professeurs particuliers, des services de tutorat ou d'aide aux études, des établissements de préparation à l'enseignement supérieur, des fournisseurs de services de planification des programmes d'études, des gestionnaires de plateformes pédagogiques en ligne, et des développeurs d'applications, n'est pas autorisée et est soumise au consentement écrit préalable de l'IB par l'intermédiaire d'une licence. Pour plus d'informations sur la procédure à suivre pour demander une licence, rendez-vous à l'adresse suivante : <https://ibo.org/become-an-ib-school/ib-publishing/licensing/applying-for-a-license/>.

No se podrá reproducir ninguna parte de este producto de ninguna forma ni por ningún medio electrónico o mecánico, incluidos los sistemas de almacenamiento y recuperación de información, sin que medie la autorización escrita del IB.

Además, la licencia vinculada a este producto prohíbe el uso con fines comerciales de todo archivo o fragmento seleccionado de este producto. El uso por parte de terceros —lo que incluye, a título enunciativo, editoriales, profesores particulares, servicios de apoyo académico o ayuda para el estudio, colegios preparatorios, desarrolladores de aplicaciones y entidades que presten servicios de planificación curricular u ofrezcan recursos para docentes mediante plataformas digitales— no está permitido y estará sujeto al otorgamiento previo de una licencia escrita por parte del IB. En este enlace encontrará más información sobre cómo solicitar una licencia: <https://ibo.org/become-an-ib-school/ib-publishing/licensing/applying-for-a-license/>.

**Physics**  
**Higher level**  
**Paper 1**

Wednesday 28 October 2020 (afternoon)

1 hour

---

**Instructions to candidates**

- Do not open this examination paper until instructed to do so.
- Answer all the questions.
- For each question, choose the answer you consider to be the best and indicate your choice on the answer sheet provided.
- A clean copy of the **physics data booklet** is required for this paper.
- The maximum mark for this examination paper is **[40 marks]**.

1. Which quantity has the same units as those for energy stored per unit volume?
  - A. Density
  - B. Force
  - C. Momentum
  - D. Pressure
  
2. An object of mass 8.0 kg is falling vertically through the air. The drag force acting on the object is 60 N. What is the best estimate of the acceleration of the object?
  - A. Zero
  - B.  $2.5 \text{ ms}^{-2}$
  - C.  $7.5 \text{ ms}^{-2}$
  - D.  $10 \text{ ms}^{-2}$
  
3. A body is held in translational equilibrium by three coplanar forces of magnitude 3 N, 4 N and 5 N. Three statements about these forces are
  - I. all forces are perpendicular to each other
  - II. the forces cannot act in the same direction
  - III. the vector sum of the forces is equal to zero.

Which statements are true?

- A. I and II only
  - B. I and III only
  - C. II and III only
  - D. I, II and III
- 
4. An object of mass 1 kg is thrown downwards from a height of 20 m. The initial speed of the object is  $6 \text{ ms}^{-1}$ . The object hits the ground at a speed of  $20 \text{ ms}^{-1}$ . Assume  $g = 10 \text{ ms}^{-2}$ . What is the best estimate of the energy transferred from the object to the air as it falls?
    - A. 6 J
    - B. 18 J
    - C. 182 J
    - D. 200 J

5. A car is driven from rest along a straight horizontal road. The car engine exerts a constant driving force. Friction and air resistance are negligible. How does the power developed by the engine change with the distance travelled?
- A. Power does not change.
  - B. Power decreases linearly.
  - C. Power increases linearly.
  - D. Power increases non-linearly.

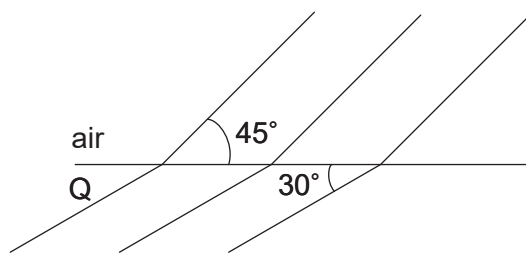
6. An object of mass  $2m$  moving at velocity  $3v$  collides with a stationary object of mass  $4m$ . The objects stick together after the collision. What is the final speed and the change in total kinetic energy immediately after the collision?

	Final speed	Change in total kinetic energy
A.	$v$	$3mv^2$
B.	$v$	$6mv^2$
C.	$2v$	$3mv^2$
D.	$2v$	$6mv^2$

7. What is **not** an assumption of the kinetic model of an ideal gas?
- A. Attractive forces between molecules are negligible.
  - B. Collision duration is negligible compared with time between collisions.
  - C. Molecules suffer negligible momentum change during wall collisions.
  - D. Molecular volume is negligible compared with gas volume.
8. A substance in the gas state has a density about 1000 times less than when it is in the liquid state. The diameter of a molecule is  $d$ . What is the best estimate of the average distance between molecules in the gas state?
- A.  $d$
  - B.  $10d$
  - C.  $100d$
  - D.  $1000d$

9. Two containers X and Y are maintained at the same temperature. X has volume  $4\text{ m}^3$  and Y has volume  $6\text{ m}^3$ . They both hold an ideal gas. The pressure in X is  $100\text{ Pa}$  and the pressure in Y is  $50\text{ Pa}$ . The containers are then joined by a tube of negligible volume. What is the final pressure in the containers?
- A.  $70\text{ Pa}$
  - B.  $75\text{ Pa}$
  - C.  $80\text{ Pa}$
  - D.  $150\text{ Pa}$
10. An object moves with simple harmonic motion. The acceleration of the object is
- A. constant.
  - B. always directed away from the centre of the oscillation.
  - C. a maximum at the centre of the oscillation.
  - D. a maximum at the extremes of the oscillation.
11. A travelling wave has a frequency of  $500\text{ Hz}$ . The closest distance between two points on the wave that have a phase difference of  $60^\circ\left(\frac{\pi}{3}\text{ rad}\right)$  is  $0.050\text{ m}$ . What is the speed of the wave?
- A.  $25\text{ m s}^{-1}$
  - B.  $75\text{ m s}^{-1}$
  - C.  $150\text{ m s}^{-1}$
  - D.  $300\text{ m s}^{-1}$

12. Wavefronts travel from air to medium Q as shown.



What is the refractive index of Q?

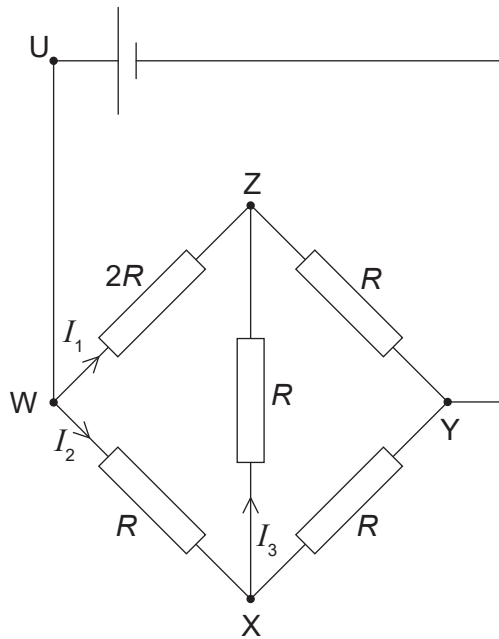
- A.  $\frac{\sin 30^\circ}{\sin 45^\circ}$
- B.  $\frac{\sin 45^\circ}{\sin 30^\circ}$
- C.  $\frac{\sin 45^\circ}{\sin 60^\circ}$
- D.  $\frac{\sin 60^\circ}{\sin 45^\circ}$
13. The air in a pipe, open at both ends, vibrates in the second harmonic mode.



What is the phase difference between the motion of a particle at P and the motion of a particle at Q?

- A. 0
- B.  $\frac{\pi}{2}$
- C.  $\pi$
- D.  $2\pi$

14. A metal wire has  $n$  free charge carriers per unit volume. The charge on the carrier is  $q$ . What additional quantity is needed to determine the current per unit area in the wire?
- A. Cross-sectional area of the wire
  - B. Drift speed of charge carriers
  - C. Potential difference across the wire
  - D. Resistivity of the metal
15. A cell of electromotive force (emf)  $E$  and zero internal resistance is in the circuit shown.



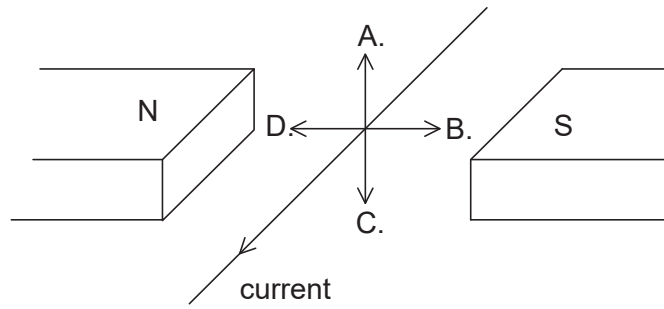
What is correct for loop WXYUW?

- A.  $E = 3I_1R - I_3R$
- B.  $E = I_3R - I_2R$
- C.  $E = I_3R$
- D.  $E = 2I_2R - I_3R$

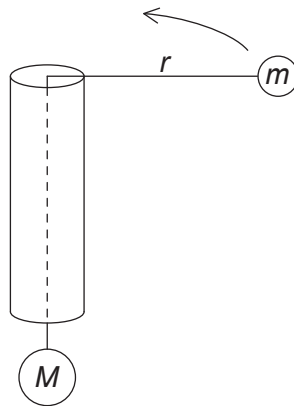
16. What is the relationship between the resistivity  $\rho$  of a uniform wire, the radius  $r$  of the wire and the length  $l$  of the wire when its resistance is constant?
- A.  $\rho \propto r^2 l$
- B.  $\rho \propto r l^2$
- C.  $\rho \propto \frac{l}{r^2}$
- D.  $\rho \propto \frac{r^2}{l}$
17. A power station generates 250 kW of power at a potential difference of 25 kV. The energy is transmitted through cables of total resistance  $4.0 \Omega$ .
- What is the power loss in the cables?
- A. 0.04 kW
- B. 0.4 kW
- C. 4 kW
- D. 40 kW
18. An electrical power supply has an internal resistance. It supplies a direct current  $I$  to an external circuit for a time  $t$ . What is the electromotive force (emf) of the power supply?
- A.  $\frac{\text{total energy transferred to the whole circuit}}{I \times t}$
- B.  $\frac{\text{total power transferred to the whole circuit}}{I \times t}$
- C.  $\frac{\text{total energy transferred to the external circuit}}{I \times t}$
- D.  $\frac{\text{total power transferred to the external circuit}}{I \times t}$



19. A current in a wire lies between the poles of a magnet. What is the direction of the electromagnetic force on the wire?



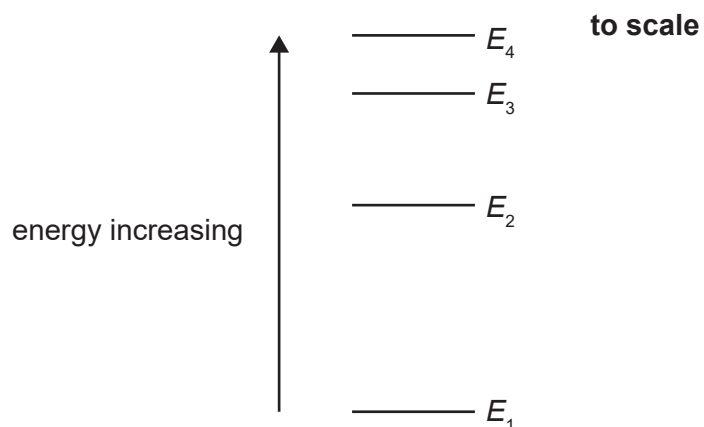
20. Mass  $M$  is attached to one end of a string. The string is passed through a hollow tube and mass  $m$  is attached to the other end. Friction between the tube and string is negligible.



Mass  $m$  travels at constant speed  $v$  in a horizontal circle of radius  $r$ . What is mass  $M$ ?

- A.  $\frac{mv^2}{r}$
- B.  $mv^2rg$
- C.  $\frac{mgv^2}{r}$
- D.  $\frac{mv^2}{gr}$

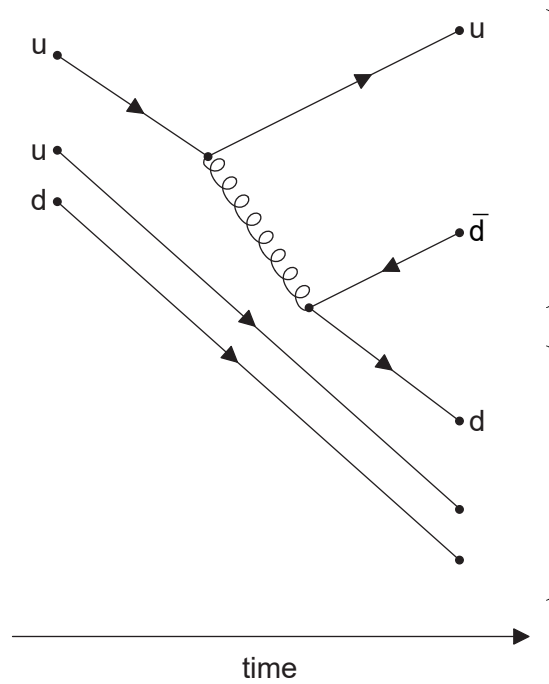
21. Four of the energy states for an atom are shown. Transition between any two states is possible.



What is the shortest wavelength of radiation that can be emitted from these four states?

- A.  $\frac{hc}{E_4 - E_1}$
- B.  $\frac{hc}{E_4} - \frac{hc}{E_1}$
- C.  $\frac{hc}{E_4 - E_3}$
- D.  $\frac{hc}{E_4} - \frac{hc}{E_3}$

22. The Feynman diagram shows some of the changes in a proton-proton collision.



What is the equation for this collision?

- A.  $p + p \rightarrow p + n + \pi^+$
- B.  $p + p \rightarrow p + n + \pi^-$
- C.  $p + p \rightarrow p + \bar{n} + \pi^+$
- D.  $p + p \rightarrow p + \bar{n} + \pi^-$

23. Three historical developments in physics were

- I. wave-particle duality
- II. the kinetic model
- III. the equivalence of mass and energy.

Which of these represented a paradigm shift in scientific thinking?

- A. I and II only
- B. I and III only
- C. II and III only
- D. I, II and III

24. The mass of nuclear fuel in a nuclear reactor decreases at the rate of 8 mg every hour. The overall reaction process has an efficiency of 50 %. What is the maximum power output of the reactor?
- A. 100 MW
  - B. 200 MW
  - C. 100 GW
  - D. 200 GW
25. A nuclear power station contains an alternating current generator. What energy transfer is performed by the generator?
- A. Electrical to kinetic
  - B. Kinetic to electrical
  - C. Nuclear to kinetic
  - D. Nuclear to electrical
26. The average temperature of the surface of a planet is five times greater than the average temperature of the surface of its moon. The emissivities of the planet and the moon are the same. The average intensity radiated by the planet is  $I$ . What is the average intensity radiated by its moon?
- A.  $\frac{I}{25}$
  - B.  $\frac{I}{125}$
  - C.  $\frac{I}{625}$
  - D.  $\frac{I}{3125}$

27. A simple pendulum and a mass–spring system oscillate with the same time period. The mass of the pendulum bob and the mass on the spring are initially identical. The masses are halved.

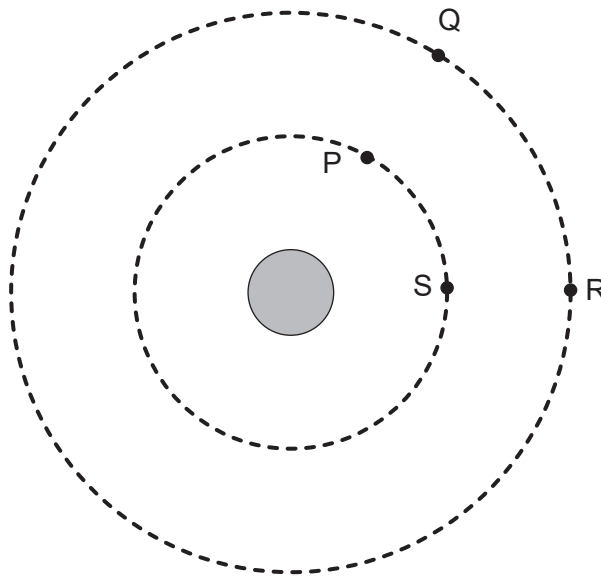
What is  $\frac{\text{time period of pendulum}}{\text{time period of mass–spring system}}$  when the masses have been changed?

- A.  $\frac{\sqrt{2}}{2}$
- B. 1
- C.  $\sqrt{2}$
- D. 2
28. Light is incident on a diffraction grating. The wavelengths of two spectral lines of the light differ by 0.59 nm and have a mean wavelength of 590 nm. The spectral lines are just resolved in the fourth order of the grating. What is the minimum number of grating lines that were illuminated?
- A. 25
- B. 250
- C. 1000
- D. 4000
29. White light is incident normally on separate diffraction gratings X and Y. Y has a greater number of lines per metre than X. Three statements about differences between X and Y are
- I. adjacent slits in the gratings are further apart for X than for Y
  - II. the angle between red and blue light in a spectral order is greater in X than in Y
  - III. the total number of visible orders is greater for X than for Y.

Which statements are correct?

- A. I and II only
- B. I and III only
- C. II and III only
- D. I, II and III

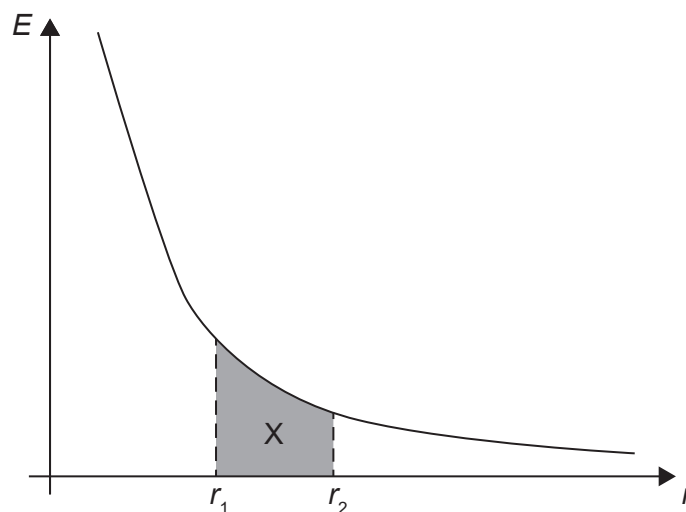
30. Two satellites W and X have the same mass. They have circular orbits around the same planet. W is closer to the surface than X. What quantity is smaller for W than for X?
- A. Gravitational force from the planet
  - B. Angular velocity
  - C. Orbital speed
  - D. Orbital period
31. P and S are two points on a gravitational equipotential surface around a planet. Q and R are two points on a different gravitational equipotential surface at a greater distance from the planet.



The greatest work done by the gravitational force is when moving a mass from

- A. P to S.
- B. Q to R.
- C. R to P.
- D. S to R.

32. The graph shows the variation of electric field strength  $E$  with distance  $r$  from a point charge.



The shaded area  $X$  is the area under the graph between two separations  $r_1$  and  $r_2$  from the charge.

What is  $X$ ?

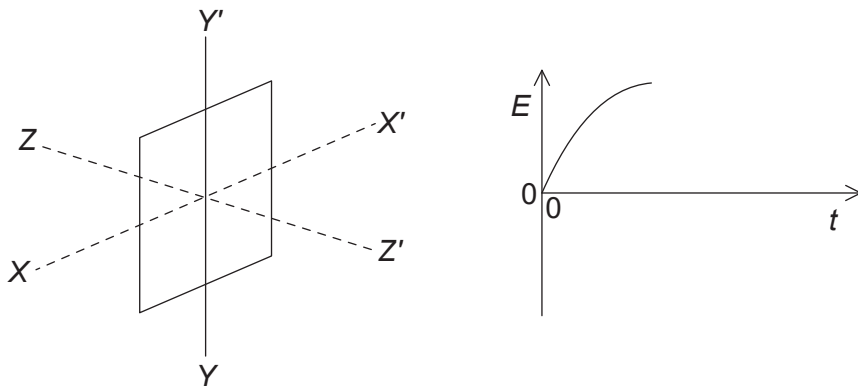
- A. The electric field average between  $r_1$  and  $r_2$
  - B. The electric potential difference between  $r_1$  and  $r_2$
  - C. The work done in moving a charge from  $r_1$  to  $r_2$
  - D. The work done in moving a charge from  $r_2$  to  $r_1$
33. Why are high voltages and low currents used when electricity is transmitted over long distances?
- A. Cables can be closer to the ground.
  - B. Electrons have a greater drift speed.
  - C. Energy losses are reduced.
  - D. Resistance of the power lines is reduced.

34. Power  $P$  is dissipated in a resistor of resistance  $R$  when there is a direct current  $I$  in the resistor.

What is the average power dissipation in a resistance  $\frac{R}{2}$  when the alternating root-mean-square (rms) current in the resistor is  $2I$ ?

- A.  $P$
- B.  $2P$
- C.  $4P$
- D.  $8P$

35. A rectangular coil rotates at a constant angular velocity. At the instant shown, the plane of the coil is at right angles to the line  $ZZ'$ . A uniform magnetic field acts in the direction  $ZZ'$ .



What rotation of the coil about a specified axis will produce the graph of electromotive force (emf)  $E$  against time  $t$ ?

- A. Through  $\frac{\pi}{2}$  about  $ZZ'$
- B. Through  $\pi$  about  $YY'$
- C. Through  $\frac{\pi}{2}$  about  $XX'$
- D. Through  $\pi$  about  $XX'$



36. A capacitor of capacitance  $C$  has initial charge  $Q$ . The capacitor is discharged through a resistor of resistance  $R$ . The potential difference  $V$  across the capacitor varies with time.

What is true for this capacitor?

- A. After time  $\frac{RC}{2}$  the potential difference across the capacitor is halved.
- B. The capacitor discharges more quickly when the resistance is changed to  $2R$ .
- C. The rate of change of charge on the capacitor is proportional to  $V$ .
- D. The time for the capacitor to lose half its charge is  $\frac{\ln 2}{RC}$ .
37. Monochromatic light is incident on a metal surface and electrons are released. The intensity of the incident light is increased. What changes, if any, occur to the rate of emission of electrons and to the kinetic energy of the emitted electrons?

	Rate of emission of electrons	Kinetic energy of the emitted electrons
A.	increase	increase
B.	decrease	no change
C.	decrease	increase
D.	increase	no change

38. The diameter of a nucleus of a particular nuclide X is 12 fm. What is the nucleon number of X?
- A. 5
- B. 10
- C. 125
- D. 155

39. A photon has a wavelength  $\lambda$ . What are the energy and momentum of the photon?

	Energy of photon	Momentum of photon
A.	$\frac{hc}{\lambda}$	$\frac{h}{\lambda}$
B.	$\frac{hc}{\lambda}$	$\frac{\lambda}{h}$
C.	$\frac{h\lambda}{c}$	$\frac{h}{\lambda}$
D.	$\frac{h\lambda}{c}$	$\frac{\lambda}{h}$

40. The Rutherford-Geiger-Marsden experiment shows that

- A. alpha particles do not obey Coulomb's law.
  - B. there is a fixed nuclear radius for each nucleus.
  - C. a large proportion of alpha particles are undeflected.
  - D. the Bohr model of the hydrogen atom is confirmed.
-