

© International Baccalaureate Organization 2022

All rights reserved. No part of this product may be reproduced in any form or by any electronic or mechanical means, including information storage and retrieval systems, without the prior written permission from the IB. Additionally, the license tied with this product prohibits use of any selected files or extracts from this product. Use by third parties, including but not limited to publishers, private teachers, tutoring or study services, preparatory schools, vendors operating curriculum mapping services or teacher resource digital platforms and app developers, whether fee-covered or not, is prohibited and is a criminal offense.

More information on how to request written permission in the form of a license can be obtained from <https://ibo.org/become-an-ib-school/ib-publishing/licensing/applying-for-a-license/>.

© Organisation du Baccalauréat International 2022

Tous droits réservés. Aucune partie de ce produit ne peut être reproduite sous quelque forme ni par quelque moyen que ce soit, électronique ou mécanique, y compris des systèmes de stockage et de récupération d'informations, sans l'autorisation écrite préalable de l'IB. De plus, la licence associée à ce produit interdit toute utilisation de tout fichier ou extrait sélectionné dans ce produit. L'utilisation par des tiers, y compris, sans toutefois s'y limiter, des éditeurs, des professeurs particuliers, des services de tutorat ou d'aide aux études, des établissements de préparation à l'enseignement supérieur, des fournisseurs de services de planification des programmes d'études, des gestionnaires de plateformes pédagogiques en ligne, et des développeurs d'applications, moyennant paiement ou non, est interdite et constitue une infraction pénale.

Pour plus d'informations sur la procédure à suivre pour obtenir une autorisation écrite sous la forme d'une licence, rendez-vous à l'adresse <https://ibo.org/become-an-ib-school/ib-publishing/licensing/applying-for-a-license/>.

© Organización del Bachillerato Internacional, 2022

Todos los derechos reservados. No se podrá reproducir ninguna parte de este producto de ninguna forma ni por ningún medio electrónico o mecánico, incluidos los sistemas de almacenamiento y recuperación de información, sin la previa autorización por escrito del IB. Además, la licencia vinculada a este producto prohíbe el uso de todo archivo o fragmento seleccionado de este producto. El uso por parte de terceros —lo que incluye, a título enunciativo, editoriales, profesores particulares, servicios de apoyo académico o ayuda para el estudio, colegios preparatorios, desarrolladores de aplicaciones y entidades que presten servicios de planificación curricular u ofrezcan recursos para docentes mediante plataformas digitales—, ya sea incluido en tasas o no, está prohibido y constituye un delito.

En este enlace encontrará más información sobre cómo solicitar una autorización por escrito en forma de licencia: <https://ibo.org/become-an-ib-school/ib-publishing/licensing/applying-for-a-license/>.

**Philosophy**  
**Standard level**  
**Paper 1**

Friday 4 November 2022 (afternoon)

1 hour

---

**Instructions to candidates**

- Do not open this examination paper until instructed to do so.
- Answer one question.
- The maximum mark for this examination paper is **[25 marks]**.

Answer **one** question.

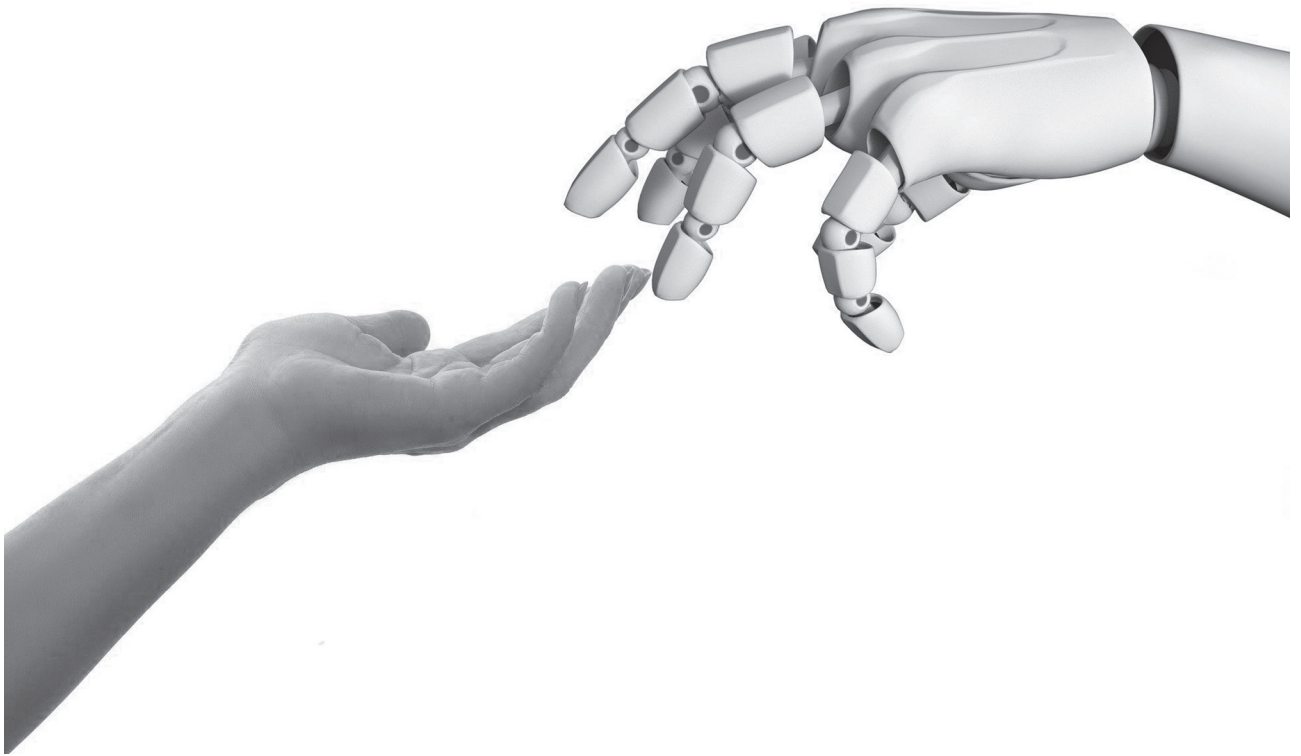
**Core Theme: Being human**

1. Read the following excerpt and develop your response as indicated below.

Stepping into a playground I had visited as a little boy, memories of my childhood began to flood my mind, each one a rich story of a distant past. As I continued to remember my childhood, each story flowed into the next, and I began to see the development of a complex character whom I refer to as “me”. All these stories that I had experienced flowed together to give me a unique history. Yet reflecting on all the experiences, goals, traits, and values that I’ve had, I had the thought that my identity seemed harder to find than one might usually believe.

With explicit reference to the stimulus and your own knowledge, discuss a philosophical issue related to the question of what it means to be human.

2. Look at the following image and develop your response as indicated below.



With explicit reference to the stimulus and your own knowledge, discuss a philosophical issue related to the question of what it means to be human.

---

**Disclaimer:**

Content used in IB assessments is taken from authentic, third-party sources. The views expressed within them belong to their individual authors and/or publishers and do not necessarily reflect the views of the IB.

**References:**

1. Durante, C., 2013. A Philosophical Identity Crisis. *Philosophy Now*, [e-journal] 97. Available at: [https://philosophynow.org/issues/97/A\\_Philosophical\\_Identity\\_Crisis](https://philosophynow.org/issues/97/A_Philosophical_Identity_Crisis) [Accessed 20 September 2020]. Source adapted.
2. [Robot and human hands touching] 2018. [image online] Available at: <https://pixabay.com/photos/connection-hand-human-robot-touch-3308188> [Accessed 19 April 2021].